

(19) World Intellectual Property Organization
International Bureau



(43) International Publication Date
4 October 2001 (04.10.2001)

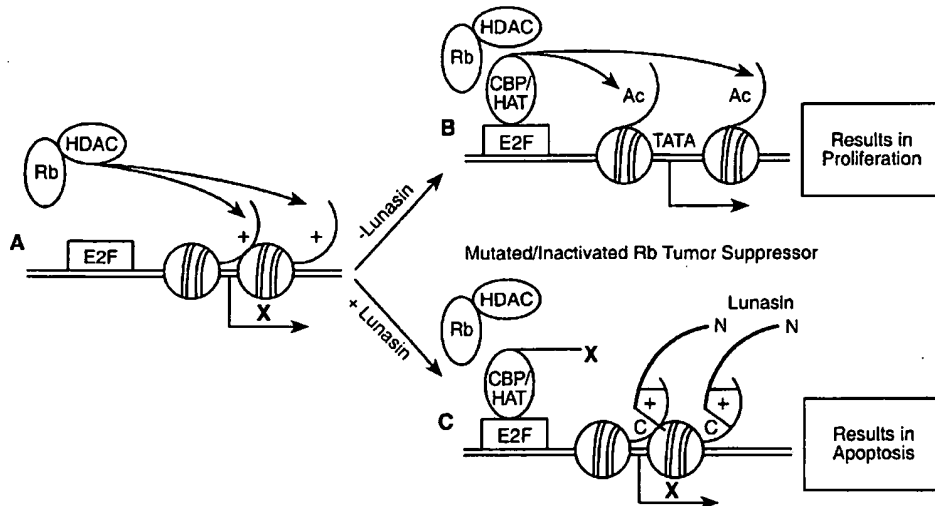
PCT

(10) International Publication Number
WO 01/72784 A2

- (51) International Patent Classification⁷: C07K 14/415, C12N 15/29, A61K 38/16, A61P 35/00
- (52) Inventor; and
- (75) Inventor/Applicant (for US only): GALVEZ, Alfredo, F. [PH/US]; 2800 Dover Avenue #G-5, Fairfield, CA 94533 (US).
- (21) International Application Number: PCT/US01/09453
- (22) International Filing Date: 23 March 2001 (23.03.2001)
- (74) Agents: PETERS, Howard, M. et al.; Peters, Vemy, Jones & Biksa, LLP, Suite 6, 385 Sherman Avenue, Palo Alto, CA 94306 (US).
- (25) Filing Language: English
- (26) Publication Language: English
- (30) Priority Data: 09/534,705 24 March 2000 (24.03.2000) US
- (81) Designated States (national): AE, AG, AL, AM, AT, AU, AZ, BA, BB, BG, BR, BY, BZ, CA, CH, CN, CR, CU, CZ, DE, DK, DM, DZ, EE, ES, FI, GB, GD, GE, GH, GM, HR, HU, ID, IL, IN, IS, JP, KE, KG, KP, KR, KZ, LC, LK, LR, LS, LT, LU, LV, MA, MD, MG, MK, MN, MW, MX, MZ, NO, NZ, PL, PT, RO, RU, SD, SE, SG, SI, SK, SL, TJ, TM, TR, TT, TZ, UA, UG, US, UZ, VN, YU, ZA, ZW.
- (63) Related by continuation (CON) or continuation-in-part (CIP) to earlier application: US 09/534,705 (CIP) Filed on 24 March 2000 (24.03.2000)
- (84) Designated States (regional): ARIPO patent (GH, GM, KE, LS, MW, MZ, SD, SL, SZ, TZ, UG, ZW), Eurasian patent (AM, AZ, BY, KG, KZ, MD, RU, TJ, TM), European patent (AT, BE, CH, CY, DE, DK, ES, FI, FR, GB, GR, IE, IT, LU, MC, NL, PT, SE, TR), OAPI patent (BF, BJ, CF, CG, CI, CM, GA, GN, GW, ML, MR, NE, SN, TD, TG).
- (71) Applicant (for all designated States except US): FILGEN BIOSCIENCES, INC. [US/US]; 2333 Courage Drive, Suite C, Fairfield, CA 94533 (US).

[Continued on next page]

(54) Title: THERAPEUTIC PEPTIDES HAVING A MOTIF THAT BINDS SPECIFICALLY TO NON-ACETYLATED H3 AND H4 HISTONES FOR CANCER THERAPY



(57) Abstract: The present invention describes a composition of matter comprising a conserved structural motif that allows the targeting and binding of a chromatin binding protein to non-acetylated histone H3 and H4 and prevents their acetylation. This invention is responsible for the anti-carcinogenic property of a chromatin binding peptide isolated from soybean seed. This structural motif is found in a highly conserved manner in other chromatin-binding proteins from different species. Modifications to this structural motif such as fusions to other proteins with functional motifs and amino acid substitutions have potential therapeutic applications and can be developed as an *in vivo* gene silencing technology for biological and medical research. In particular, active fragments of the lunasin peptide and active analogs of the lunasin peptide are useful in this invention. Pharmaceutical compositions useful in retarding or stopping or reducing various types of cancers are described.

WO 01/72784 A2

BEST AVAILABLE COPY

28+7



Published:

— without international search report and to be republished upon receipt of that report

For two-letter codes and other abbreviations, refer to the "Guidance Notes on Codes and Abbreviations" appearing at the beginning of each regular issue of the PCT Gazette.

THERAPEUTIC PEPTIDES HAVING A MOTIF THAT BINDS
SPECIFICALLY TO NON-ACETYLATED H3 AND H4 HISTONES
FOR CANCER THERAPY

BACKGROUND OF THE INVENTION

5

Related Applications

This application is a continuation-in-part of U.S. Serial No. 09/534,705, filed March 24, 2000, which is incorporated herein by reference in its entirety.

10

Field of the Invention

This invention relates to lunasin, its fragments, analogs and the like which have a defined helical moiety which comprises a structurally conserved helical motif, a stretch of polyacidic amino acids (either aspartic or glutamic acid) and an Arg-Gly-Asp (RGD) for lunasin targeting and binding to non-acetylated N-terminal tails of H3 and H4 histones, making them unavailable for acetylation, and for cell membrane adherence and internalization. The substances are useful in a variety of disease therapy including reduction/repression of existing cancer or prevention of cancer initiation.

Description of Related Art

20 Lunasin, the small subunit of a soybean 2S albumin, colocalizes with endoreduplicated genomic has DNA in storage cells of developing seed.

The lunasin peptide with its unique poly-apartic acid carboxyl end and was proposed to have an important biological function when it was isolated and sequenced but not cloned from soybean seeds by a Japanese group 13 years ago (Odani et al., 1987 *J Biol Chem*, vol 25 262:10502). However, only upon the isolation and cloning of the *Gm2S-1* cDNA could a putative biological role for lunasin be inferred. The *Gm2S-1* cDNA encodes lunasin as a 43 amino acid small subunit component of a post-translationally processed 2S albumin (Galvez et al., 1997 *Plant Physiol*, vol. 114:1567). *Gm2S-1* expression occurs only in the cotyledon and coincides with the initiation of mitotic arrest and DNA endoreduplication in developing soybean seed (Galvez et al., 1997). DNA endoreduplication is a unique cell cycle of G1 and S phases without cell division that occurs only in terminally differentiated storage parenchyma cells (Goldberg et al, 1994 *Science*, vol. 266:605). *In situ* hybridization experiments using a

30

lunasin antisense RNA probe and immunolocalization using a polyclonal antibody raised against the carboxyl end of lunasin, showed lunasin expression in storage parenchyma cells undergoing DNA endoreduplication and cell expansion but not in actively dividing cells of the cotyledon (Fig. 1A, 1B, 1C, 1D and 1E.).

5 The temporal and spatial expression of lunasin in developing seeds suggest a biological role of lunasin as an effector molecule that inhibits cell division and allows DNA endoreduplication and cell expansion to occur in storage parenchyma cells during seed development. Its colocalization with endoreduplicated genomic DNA suggests a potential role as a repressor of gene expression in newly replicated genomic DNA. Despite the presence of multiple copies of the genome, the level of gene expression in storage parenchyma cells
10 corresponds to a single copy of the genome. By binding to hypoacetylated chromatin associated with newly replicated DNA, lunasin is thought to silence expression of genes in the reduplicated genome by forming repressed chromatin structures. In addition, lunasin binding to hypoacetylated chromatin could inhibit mitotic condensation of the chromosomes and prevent microtubule nucleation, leading to the failure of cell division in expanding storage
15 parenchyma cells. In support of this hypothesis, studies have shown that the phosphorylation of serine 10 in the amino terminal tail of histone H3 is required for the proper segregation and condensation of chromosomes during mitosis (Wei et al., 1999 *Cell*, vol. 97:99). Lunasin as described below has preferential binding affinity to the non-acetylated amino terminal tails of histone H3 and H4. By making the serine 10 unavailable for phosphorylation as a result
20 of lunasin binding to the H3 amino terminal tail, lunasin can prevent condensation of chromosomes and consequently inhibit cell division. Constitutive expression of lunasin in mammalian cells

Disrupt centromere assembly and mitosis.

25 The temporal and spatial expression of lunasin coincide with the initiation of mitotic arrest and DNA endoreduplication in developing soybean cotyledon. This information, together with the observation that *lunasin* expression caused aberrant cell division in bacteria (Galvez and de Lumen, 1999 *Nature Biotechnology*, vol. 17:495), led to the hypothesis that lunasin should also disrupt eukaryotic cell division. To test this hypothesis, a chimeric gene encoding the lunasin peptide tagged with green fluorescent protein (GFP) was constructed. The

transient transfection of the GFP-lunasin construct arrested cell division, caused abnormal spindle fiber elongation, chromosomal fragmentation and cell lysis in murine embryo fibroblast, murine hepatoma, and human breast cancer cells (Galvez and de Lumen, 1999). Transfection of a control construct with a deleted poly-aspartyl end abolished lunasin's antimitotic effect.

5 The mechanism of action of other antimitotic agents such as vinblastine, colchicine, nocodazole and taxol involves the disruption of mitotic spindle dynamics during mitosis. Unlike these compounds, lunasin disrupts mitosis in mammalian cells by binding to chromatin and preventing the formation of the kinetochore complex in the centromere. This is likely brought about by the binding of the negatively charged lunasin to the highly basic histones
10 found within the nucleosomes of condensed chromosomes, particularly to regions that contain more positively charged, hypo-acetylated chromatin such as found in telomeres and centromeres. The displacement by lunasin of the kinetochore proteins normally bound to the centromere leads to the failure of spindle fiber attachment, and eventually to mitotic arrest and cell death. The observations of lunasin adhering to the fragmenting chromosomes after cell
15 lysis, the asymmetric distribution of metaphase chromosomes, the elongated spindle fibers, and the unattached kinetochores observed in *lunasin*-transfected cells are consistent with this proposed model for the mechanism of action of lunasin (Galvez and de Lumen, 1999).

Lunasin peptide adheres to mammalian cell membrane, gets internalized and binds to regions of hypoacetylated chromatin (i.e. telomeres)

20 Lunasin contains the cell adhesion motif RGD (arg-gly-asp). Synthetic and recombinant peptides containing the RGD motif derived from sequences of extracellular matrix proteins like fibronectin, have been shown to bind to specific membrane integrins in mammalian cells (E. Ruoslahti, M.D. Piersbacher. *Cell*, vol. 44, 517 (1986); S.K. Akiyama, K. Olden, K.M. Yamada. *Cancer Metastasis Rev.*, vol. 14, 173 (1995)). To determine whether lunasin has a
25 functional RGD motif, a cell adhesion assay using synthetic lunasin peptides and mice embryo fibroblast cells (C3H 10T1/2) was conducted (L.M. De Luca, *et al.*, *Methods of Enzymol*, vol. 190:81-91 (1990)). The lunasin peptide adhered to C3H cells in a dose-dependent manner and that the deletion of the RGD tripeptide from lunasin (Lunasin-GRG) prevented cell

adhesion (Fig. 2). When applied exogenously to the growth media, lunasin was not only adhering to the cell membrane but became internalized as well, preferentially binding to the telomeres of chromosomes during metaphase (Fig. 3A, 3B, 3C, 3D, 3E, and 3F). However, unlike the constitutive expression of lunasin gene in transfected cells that disrupts kinetochore formation (Galvez and de Lumen, 1999), internalized lunasin did not affect kinetochore assembly. Immunostaining experiments showed the normal kinetochore location of the cell cycle checkpoint protein, MAD (Y. Li; R. Benezra, *Science*, vol. 274, 246 (1996); R.H. Chen, J.C. Waters, E.D. Salmon, A.W. Murray, *Science*, vol. 274, 242 (1996)), in the centromere of metaphase chromosomes. As a result, the exogenous application of lunasin did not affect cell division and proliferation of murine embryo fibroblast cells. Immunostaining using the lunasin polyclonal antibody also showed that internalized lunasin was initially found in the cytoplasm and then eventually bound to hypoacetylated regions of the chromosome, such as those in the telomeres, upon nuclear membrane breakdown at prometaphase (Fig. 3A, 3B, 3C, 3D, 3E, and 3F.). However, at this stage of mitosis, kinetochore assembly and spindle fiber attachment to centromeres had already transpired. This explains the non-disruptive effect of exogenously applied lunasin on cell division as compared to the antimetabolic effect observed when lunasin is constitutively expressed in *lunasin*-transfected mammalian cells (Galvez and de Lumen, 1999).

A U.S. patent of interest is U.S. 6,107,287 issued August 23, 2000.

All articles, references, standards, patents, patent applications and the like cited in this application are hereby incorporated herein by reference in their entirety.

With regard to the above background description, there exists a significant need to provide a method and pharmaceutical composition to inhibit or retard various cancers from initializing and or reducing existing cancers for shrinking particularly in a human being. The present invention provide such a method and pharmaceutical composition.

SUMMARY OF THE INVENTION

The present invention relates to a method of cancer treatment or prevention, which method involves:

A. Administering to a mammalian subject having tumor cells in need of therapy or

a mammalian subject at risk to carcinogen-mediated cancer formation an effective amount of an isolated and purified therapeutic agent selected from the group consisting of lunasin peptide, an active fragment of lunasin peptide, an active lunasin peptide analog and combinations thereof which lunasin moiety has a helical portion which comprises the structural motif (ED)NNXXXEK(IV), where E is glutamic acid, D is aspartic acid, K is lysine, I is isoleucine, V is valine, X is conserved hydrophobic amino acids and N is any amino acid, a sequence of at least 5 up to 15 poly-acidic amino acids (glutamic or aspartic acids), and an Arg-Gly-Asp (RGD) motif which is useful for targeting and binding to non-acetylated N-terminal tails of H4 and H3 histones and for functional adhesion of lunasin moiety to the outer cell membrane;

10 B. Causing the lunasin peptide, the active fragment of lunasin peptide, the active lunasin peptide analog or combinations thereof to contact and to adhere to the functional cell membrane;

15 C. Causing the lunasin peptide, the active fragment of lunasin peptide, the active lunasin peptide analog or combinations thereof to contact and to become internalized within the functioning cell;

20 D. Causing the lunasin peptide, the active fragment of lunasin peptide, the active lunasin peptide analog or combinations thereof to preferentially bind to the deacylated N-terminal portions of histone H3 and H4, causing these histones to be unavailable for further acylation in regions of the chromosomes of the cell and which are enriched with hypoacetylated repressed chromatin;

 E. Inducing apoptosis of the cell by repression of carcinogen and oncogene-mediated gene expression within the cell; and

 F. Resulting in significantly reduced or termination of cancer activity of existing tumor cells or the prevention of significant tumor cell initiation.

25 The method wherein the mammal is a human being.

 The method wherein the method is one of treating an already existing cancer.

30 The method wherein the method is one of preventing or repressing the induction of cancer.

The method wherein the therapeutic agent comprises lunasin peptide.

The method wherein the therapeutic agent comprises an active fragment of lunasin peptide.

5 The method wherein the therapeutic agent comprises an active analog of lunasin peptide.

The method wherein the therapeutic agent is administered orally, topically, intranasally, intramuscularly, subcutaneously, intraperitoneally, buccally or combinations of these methods.

10 The method wherein the therapeutic agent is administered topically in a pharmaceutically acceptable excipient.

In another aspect the present invention concerns a method and a pharmaceutical composition wherein the pharmaceutical composition is administered topically to retard or stop cancers of the skin.

15 In another aspect the present invention concerns a method and a pharmaceutical composition wherein the pharmaceutical composition is administered intranasally or as part of inhalation therapy to retard or stop cancers of the lung.

In another aspect the present invention concerns a method and a pharmaceutical composition wherein the pharmaceutical composition is administered intravenously to retard or stop cancers of the breast, prostate, liver, kidney or any other internal organs or tissues.

20 In another aspect the present invention concerns a method and a pharmaceutical composition wherein the pharmaceutical composition is administered as a vaginal suppository to retard or stop cancers of the cervix, uterus or ovary.

25 In another aspect the present invention concerns a method and a pharmaceutical composition wherein the pharmaceutical composition is administered as an anally applied suppository to retard or stop cancers of the lower gastro-intestinal tract.

In another aspect the present invention concerns a method and a pharmaceutical composition wherein the pharmaceutical composition is administered orally to retard or stop cancers of the colon, upper gastrointestinal tract, breast, prostate, liver, kidney or any other internal organs or tissues.

30 In another aspect the present invention concerns a method and a pharmaceutical composition wherein the pharmaceutical composition is administered intramuscularly or

subcutaneously as a general protection against cancer development in internal organs.

In another aspect, the present invention concerns a method of targeting and binding non-acetylated H3, H4 histones and other histone -variants such as the centromere-specific H3 variant, CENP-A, which method comprises:

- 5 A. Prevention of acetylation of amino acid residues found in N-terminal tail of H3, H4 and variant histones,
- B. Prevention of phosphorylation of amino acid residues found in N-terminal tails of H3, H4 and variant histones.
- C. Prevention of methylation of amino acid residues found in N-terminal tails of H3, H4 and variant histones.
- 10 D. Prevention of other post-translational modifications of amino acid residues found in N-terminal tails of H3, H4 and variant histones, with the result.

In another aspect, the present invention concerns a composition of matter, that is required to allow targeting and binding of proteins to non-acetylated H3, H4 histones and other histone -variants such as the centromere-specified H3 variant, CENP-A, which composition
15 comprises:

- A. Presence of a helical motif that is structurally conserved, comprising a consensus sequence of 9 amino acid residues, composed of: (ED)NNXXXEK(IV), where E is glutamic acid, D is aspartic acid, I is isoleucine, V is valine, K is lysine residues, N is any amino acid, and X is conserved hydrophobic residues, and the
- 20 B. Presence of a block of 5-10 residues of acidic amino acids (either E is glutamic acid or D is aspartic acid), upstream or downstream of the helical motif.

BRIEF DESCRIPTION OF THE FIGURES

Figures 1A, 1B, 1C, 1D and 1E are schematic representations of lunasin found in storage
25 parenchyma cells and co-localizes with endoreduplicated DNA.

Figure 2 is a graphic representation of relative cell adhesion versus amount of peptide added for lunasin and lunasin (-GRC) as it attaches to mammalian cell membrane through its RGD motif.

Figures 3A, 3B, 3C, 3D, 3E and 3F are schematic representations of lunasin adhering to

the cell membrane and then becoming internalized.

Figures 4A and 4B are schematic representations of lunasin as a major constituent of the Bowman Birk protease inhibitor (BBIC) preparation.

Figure 5 is a graphic representation of how lunasin inhibits carcinogen-induced transformation.

5 Figure 6 is a graphic representation of lunasin in prevention of carcinogen-induced tumorous foci formation in normal cells.

Figures 7A, 7B, 7C, 7D, 7E and 7F are photographic representations of C3H cells transfected with E1A- Δ CR1, in the absence of lunasin and the presence of lunasin which induces apoptosis.

10 Figure 8 is a schematic representation and model for the prevention of cancer in the presence of lunasin.

Figure 9 is a graphic representation showing lunasin preferentially binding to deacetylated histone H4.

15 Figure 10 is a graphic representation showing the dose response of lunasin, trLunasin-del and NLS-trLunasin to increasing amounts of deacetylated H4 peptide.

Figure 11 is a table which compares motifs showing that lunasin contains a helical motif having high structural homology to other chromatin binding proteins.

Figure 12 is a graphic representation of the effect of modified lunasin peptides on transformation assay.

20 Figure 13 is a schematic representation depicting how lunasin binds to deacetylated histones and inhibits histone acylation.

DETAILED DESCRIPTION OF THE INVENTION AND PREFERRED EMBODIMENTS

25 Definitions

As used herein:

The standard literature definitions found in articles and reference books are to be used to determine the definitions of the terms as found herein.

30 "Amino acid" refers to any of the naturally occurring amino acids having standard designations, G, V, K, I, W, etc. It also refers to those known synthetic amino acids.

Conserved hydrophobic amino acid refers to but are not limited to, for example, histidine, isoleucine, valine, methionine, alanine, or tyrosine.

“Lunasin” refers to compounds comprising the natural and recombinantly produced soybean lunasin polypeptide (coincidentally purified and sequenced by Odani et al., 1987 (Ser-
5 Lys-Trp-Gln-His-Gln-Gln-Asp-Ser-Cys-Arg-Lys-Gln-Leu-Gln-Gly-Val-Asn-Leu-Thr-Pro-
Cys-Glu-Lys-His-Ile-Met-Glu-Lys-Ile-Gln-Gly-Arg-Gly-Asp-Asp-Asp-Asp-Asp-Asp-Asp-
Asp-Asp (SEQ. ID. 1).

“Lunasin” refers to the biologically active lunasin peptide having 1-43 amino acids.

“Lunasin or an active variant thereof” refers to the biologically active lunasin peptide
10 having 43 amino acids, or to portions of the 1-43 amino acid chain which are also biologically
active (shown herein as 22-43 amino acids meaning amino acid 22 to amino acid 43 of
lunasin). See sequence data below:

protein having amino acids 1 to 42 (SEQ. ID.2),
protein having amino acids 1 to 41 (SEQ. ID.3),
15 protein having amino acids 1 to 40 (SEQ. ID.4),
protein having amino acids 1 to 39 (SEQ. ID.5),
protein having amino acids 1 to 38 (SEQ. ID.6).
protein having amino acids 22 to 43 (SEQ. ID.7),
protein having amino acids 22 to 42 (SEQ. ID.8),
20 protein having amino acids 22 to 41 (SEQ. ID.9),
protein having amino acids 22 to 40 (SEQ. ID.10),
protein having amino acids 22 to 39 (SEQ. ID.11), and
protein having amino acids 22 to 38 (SEQ. ID.12)

Combinations of these active protein are also included.

25 Polyacidic amino acids refer, for example, to glutamic acid or aspartic acid.

1. The lunasin peptide has anti-carcinogenic property

Lunasin has been shown to be a major constituent of the Bowman Birk protease inhibitor (BBIC) preparation (Fig. 4A and 4B). BBIC has been shown to be chemopreventive in several *in vitro* and animal model studies (Examples: Yavelow et al., 1985 *PNAS*, *vol.*

82:5395; Weed et al., 1985 *Carcinogenesis*, vol 6:1239; Messadi et al., 1986 *JNCI*, vol. 76:447; Baturay, et al., 1986 *Cell Biol and Toxic*, vol. 2:21; St. Clair et. al., 1990 *Cancer Res*, vol 50:580; Reviews: Kennedy et al., 1993 *Preventive Med*, vol 22:796; Kennedy et al., 1995 *JNutr*, vol. 125:733S). The evidence for the anti-carcinogenic effect of BBIC was compelling enough that NCI is now conducting human clinical trials (currently in Phase II) to prove its effectivity (Kennedy et al., 1993 *Preventive Med*, vol. 22:796). However, despite the accumulated *in vitro* and *in vivo* data pointing to the anticarcinogenic property of BBIC, the underlying mechanism of action has not been elucidated. More importantly, several scientific evidence have shown that BBIC or protease inhibitors (PI), in general, are unlikely to be the active anticarcinogenic component found in soybean. For one, cooked soy products, which are devoid of any protease inhibitor activity, are equally as effective at reducing cancer development as raw soy products (Clawson, 1996 *Cancer Invest.*, vol. 14(6):608). The effect of protease inhibitors appears to be indirect because dietary PI are, in general, poorly absorbed from the gastro-intestinal (GI) tract, and never reach target organs in any measurable quantity (Clawson, 1996).

15 Lunasin is responsible for the cancer preventive activity attributed to BBIC, specially since the lunasin peptide is a significant contaminant in the BBIC preparation. Cell transformation assays conducted at UC Berkeley showed that lunasin was on average twice more effective than equimolar amounts (125 nM) of BBIC in reducing foci formation in C3H 10 T1/2 cells treated with potent chemical carcinogens, 7, 12-dimethylbenz[a]anthracene (DMBA) and 3-methylcholanthrene (MCA) (Fig.5). More importantly, BBIC with immunodepleted lunasin, prepared by applying commercially available BBI (Sigma T9777) through cationic exchange and immuno-affinity columns and then collecting flow through fractions, showed significant loss of its anti-transformation property (Fig.6). The duplicated sets of experiments showed that BBIC with immunodepleted lunasin did not inhibit foci formation upon carcinogen treatment, similar to the effect of the untreated positive control. 25 These results indicate that lunasin is the major cancer preventive ingredient in the BBIC preparation.

What then is the role of BBI in the cancer preventive property attributed to the BBIC soybean preparation? As pointed out by Clawson (1996), the effect of BBI appears to be

indirect. Digestion experiments have shown that lunasin by itself gets broken down by pancreatic digestive enzymes but resists digestion when a chymotrypsin inhibitor like BBI is mixed with lunasin at equimolar ratios (Pascual and de Lumen, personal communication). It is most likely that BBI's role is to prevent the digestion of lunasin in the gut to allow intact lunasin to be absorbed through the gastro-intestinal tract. Once in the circulatory system, lunasin can be distributed to the various tissues and can get inside somatic cells by attaching to specific integrin receptors found in cell membranes through its RGD cell adhesion motif. Inside the cell, lunasin then preferentially binds to regions of the chromosomes enriched with hypoacetylated chromatin upon nuclear membrane breakdown at prometaphase.

2. Anti-carcinogenic property of lunasin: a molecular model based on lunasin binding to deacetylated histones and inhibition of histone acetylation.

The affinity of the lunasin peptide to regions of hypoacetylated chromatin suggests that lunasin may be involved in chromatin modification. Regulation of the post-translational modification of chromatin has been implicated in cell-cycle control and in how tumor suppressors act as critical downstream effectors during carcinogenesis (R.A. DePinho, *Nature*, vol. 391, 533 (1998)). Lunasin also contains a functional cell adhesion motif, Arg-Gly-Asp (RGD), which allows exogenously applied lunasin to bind and become internalized in mammalian cells. The presence of the RGD motif and its chromatin-binding characteristic point to a potential anti-carcinogenic role for lunasin.

Histone acetylation is associated with transcriptional activity in eukaryotic cells, having been observed mainly in transcriptionally active chromatin (K. Struhl, *Genes Dev.*, vol. 12, 599 (1998); M. Grunstein, *Nature*, vol. 389, 349 (1997)). The inhibition of histone acetylation by lunasin provides a mechanistic model to explain the anti-carcinogenesis property of this soybean peptide. The Rb tumor suppressor, a critical downstream effector during carcinogenesis (R.A. Weinberg, *Cell*, vol. 81, 323 (1995); M.C. Paggi, *et al.*, *J Cell Biochem.*, vol. 62, 418 (1996)), was hypothesized to repress a subset of E2F-regulated genes by binding to the E2F family of DNA-binding transcription factors and by recruiting a histone deacetylase (HDAC1) to maintain a hypoacetylated state of condensed chromatin around the transcription start site (A. Brehm *et al.*, *Nature*, vol. 391, 597 (1998); L. Managhi-Jaulin *et al.* *Nature*, vol. 391, 601 (1998); R.X. Luo, A.A. Postigo, D.C. Dean, *Cell*, vol. 92, 463

(1998)). This dual repression mechanism is abrogated upon Rb inactivation during carcinogenesis, resulting in the release of Rb binding to the E2F promoter, acetylation of the repressed chromatin structure and the induction of expression of the E2F-regulated genes involved in cell proliferation (A. Brehm *et al.*, *Nature*, vol. 391, 597 (1998); L. Managhi-Jaulin *et al.* *Nature*, vol. 391, 601 (1998); R.X. Luo, A.A. Postigo, D.C. Dean, *Cell*, vol. 92, 5 463 (1998)).

By binding to deacetylated histones found in repressed chromatin, it was hypothesized that lunasin can prevent cell proliferation and transformation even in the absence of a functional Rb by inhibiting histone acetylation and activation of E2F-regulated genes. To test this molecular model of lunasin action, C3H cells were first treated with lunasin and then 10 transfected with E1A viral oncogene that specifically induces cell proliferation by binding and inactivating Rb (J.R. Nevins, *Science*, vol. 258, 424 (1992)). As a negative control, E1A with deleted conserved region 1 (E1A Δ CR1) that abolishes the RB binding domain was likewise used in the transfection experiments (D. Trouche, T. Kouzidares, *Proc. Natl. Acad. Sci., USA*, vol. 93, 1439 (1996)). C3H cells transfected with E1A- Δ CR1, as expected, showed normally 15 dividing cells at 20 h after transfection, both in the presence and absence of lunasin (Fig. 7A, 7B, 7C, 7D, 7E and 7F). Transfection with the E1Awt in the absence of lunasin also showed normal cell proliferation (Fig. 7A, 7B, 7C, 7D, 7E and 7F). However, C3H cells initially treated with lunasin for 24h and then transfected with E1Awt resulted in the preponderance of non-adherent cells in solution at 20 h after transfection. Phase contrast image of the non- 20 adherent cells showed characteristic morphology of apoptotic cells which was confirmed by the positive fluorescent staining for Annexin V-FITC (Fig. 7A, 7B, 7C, 7D, 7E and 7F.).

The induction of apoptosis by lunasin in E1A-transfected C3H cells provides evidence to a mechanistic model explaining lunasin's suppression of carcinogen-mediated transformation (Fig.8). The Rb tumor suppressor inhibits the expression of E2F-regulated 25 genes in part by tethering a histone deacetylase (HDAC1) to maintain a condensed hypoacetylated chromatin around the transcription start site (A. Brehm *et al.*, *Nature*, vol. 391, 597 (1998); L. Managhi-Jaulin *et al.* *Nature*, vol. 391, 601 (1998); R.X. Luo, A.A. Postigo, D.C. Dean, *Cell*, vol. 92, 463 (1998)). The inactivation of Rb by carcinogen treatment and oncogene expression results in the loosening up of the repressed chromatin structure by

localized histone acetylation (R.H. Giles, D.J. Peters, M.H. Breuning, *Trends Genet.*, vol. 14, 178 (1998)). This consequently results in the activation of genes involved in cell proliferation, which eventually leads to carcinogenesis. When lunasin is present in normal cells before Rb is inactivated, the deacetylated N-terminal tails of histone H3 and H4 found in repressed chromatin presumably bind to the acidic carboxyl end of lunasin. This makes
5 these deacetylated histones unavailable as substrates for histone acetylation, thus maintaining the repressed chromatin structure around the E2F promoter even when carcinogens and the viral oncogene, E1A, inactivate Rb. The inhibition of expression of E2F-regulated genes triggers apoptosis instead of cell proliferation, which normally occurs when these genes are activated during carcinogenesis. The induction of apoptosis in cells with inactivated Rb by
10 the presence of lunasin can explain the reduced number of transformed foci in normal murine fibroblast cells that have been treated with potent chemical carcinogens.

UTILITY AND ADMINISTRATION - Administration of the compounds of this invention can be via any of the accepted modes of administration for therapeutic agents. These methods include oral, parenteral, transdermal, subcutaneous and other modes.
15 Depending on the intended mode, the composition may be in many forms, for example, solid, semi-solid, or liquid dosage forms, including tablets, time release agents, pills, capsules, suspensions, solutions and the like. The compositions will include a conventional pharmaceutical excipient and an active compound as described herein or the pharmaceutically acceptable salts thereof and may, in addition, include other medicinal agents, pharmaceutical
20 agents, carriers, adjuvants, diluents, etc.

The amount of the active compound administered will, of course, be dependent on the molecular weight of selected compound, the subject being treated, the subject's weight, the severity of the affliction, the manner of the administration and the judgment of the prescribing physician. However, an effective dose is in the range of about 0.1-500 mg/kg/day, preferably
25 about 1-200 mg/kg/day. For an average 70 kg human, those dosages would amount to between about 0.01 to 35 g/day.

For solid compositions, conventional nontoxic solids include for example, pharmaceutical grades of manitol, lactose, starch, magnesium stearate, cellulose and the like may be used. Liquid pharmaceutically administratable compositions can be prepared by dissolving,

dispersing, etc., a compound and optional pharmaceutical adjuvants in an excipient, such as, for example, water, glycerol, ethanol, vegetable oil and the like to form a suspension.

Actual methods of preparing such dosage forms are known, or will be apparent to those skilled in the art; see, for example, *Remington's Pharmaceutical Sciences*, Mack Publishing Company, Easton, Penn., 15th Edition, 1975.

5 For instance for topical or intranasal or intravenous administration, the minimum dose is about 250 microg lunasin per mL of solution or per gram of solid dose up to a maximum dose of about 2.5 millig lunasin per mL of solution or per gram of solid dose.

The following preparations and examples serve to illustrate the invention. They should not be construed as narrowing it, nor as limiting its scope.

10 Experimental - General

The starting materials described herein are available from commercial supply houses, from recognized contracting organizations or can be prepared from published literature sources. Unless otherwise noted the material solvents, reagents, etc. are used as received without modification.

15 EMBODIMENTS OF THE INVENTION:

The experimental evidence described above point to the utility of the lunasin peptide in disrupting specific cellular processes like carcinogenesis. The proposed lunasin mechanism of action involves its preferential binding to the deacetylated N-terminal tails of histone H3 and H4, making them unavailable as substrates for acetylation. Since the acetylation of histone H3 and H4 is associated with gene activation, lunasin acts as a repressor of gene expression when it binds to deacetylated histones found in promoter regions of negatively regulated genes (such as the family of E2F-regulated genes that are negatively regulated by the Rb tumor suppressor). The ability of lunasin to repress gene expression by preferential binding to deacetylated histones and preventing their acetylation has practical wide-ranging biological and therapeutic applications.

25 The invention describes the identification of the functional motif in the lunasin peptide responsible for its chromatin-binding property and its ability to inhibit acetylation of H3 and H4 histones. This invention is important for designing future drugs involving targeted repression of genes and for practical application in biological research by providing a method

to target modified lunasin peptides to specific genes or genome locations and for the study of phenotypic effects of gene inactivation and silencing.

EXAMPLE 1

BINDING OF LUNASIN AND FRAGMENTS THEREOF

5 (a) The lunasin peptide preferentially binds to deacetylated histones and is mediated by a helical region in the carboxyl end.

The antimetabolic effect of the lunasin gene in transfected mammalian cells has been attributed to the competitive binding of lunasin to centromeres as visualized by GFP fluorescence and immunostaining (Galvez and de Lumen, 1999). On the other hand,
10 immunostaining of exogenously applied lunasin revealed the preferential binding of lunasin mainly to the telomeres of metaphase chromosomes (Fig. 3). Telomeres, like the centromeres are genomic regions that are also rich in hypoacetylated chromatin, comprising mainly of deacetylated histones (Braunstein *et al.*, *Genes Dev*, vol. 7, 592, 1993). The increased affinity of lunasin to these regions may be due to the greater electrostatic attraction of the negatively
15 charged carboxyl end of lunasin to the positively charged N-terminal tails of deacetylated histones.

To test whether lunasin binds preferentially to deacetylated histones, an *in vitro* immunobinding assay was conducted using acetylated and deacetylated forms of the H4 N-terminal tail (assay protocol was described in Galvez and de Lumen, 1999). The full lunasin peptide
20 (Lunasin) and lunasin with deleted RGD motif (Lunasin-GRG) were found to bind with high affinity to deacetylated H4 N-terminus but not to the tetra-acetylated H4 (Fig. 9). This suggests that lunasin binds with high specificity to deacetylated H4 and that the RGD-motif is not important to its binding affinity. However, there was a significant reduction in deacetylated H4 binding for truncated lunasin (trLunasin) that contains only the reactive
25 carboxyl end of the peptide. This indicates that the N-terminus of lunasin is also important for binding to deacetylated histones most likely by stabilizing the lunasin structure to allow electrostatic interactions between the carboxyl end of lunasin and deacetylated H4 to occur at higher efficiency.

A comparison of the binding affinity of lunasin, tr-Lunasin and NLS-trLunasin to

increasing dose of deacetylated H4 peptide showed an increase in lunasin binding when the amount of deacetylated H4 peptide added in the immuno-binding reaction is increased (Fig. 10). Lunasin binding to deacetylated H4 was 3X more than trLunasin-del, which in return was found to bind at significantly higher affinity than the NLS-trLunasin (Fig. 10).

The binding affinity of trLunasin to deacetylated H4 was not significantly different from
5 that of the 10 amino acid trLunasin-del peptide fragment. The trLunasin-del fragment spans
a helical domain (B. Rost, C. Sander, *Proteins*, vol. 19, 55 (1994); B. Rost, C. Sander, *J Mol.
Biol.*, vol. 232, 584 (1993)) upstream of the poly-aspartyl carboxyl end of the lunasin peptide.
The substitution of this helix by a nuclear localization sequence (NLS) in the truncated lunasin
peptide (NLS-trLunasin) resulted in the loss of binding to deacetylated H4 (Fig. 9). This
10 indicates that this helical region of lunasin may play a role in the binding of lunasin to
deacetylated histones. A homology search of this helical region revealed structural similarity
to a short, conserved region of the chromo-domain structure (R. Aasland, A.F. Stewart,
Nucleic Acids Res, vol. 23, 3168 (1995)) found in chromatin-binding proteins such as
Drosophila and human heterochromatin (DmHP1A and HuHP1B, respectively) (Fig. 11).
15 A naturally occurring mutation in *Drosophila* DmHP1A that converts isoleucine to
phenylalanine (I to F mutation) (Fig. 11) led to the disruption of the helical motif and the
consequent loss of chromatin targeting (S. Messmer, A. Franke, R. Paro, *Genes Dev.*, vol. 6,
1241 (1992)). The presence of this helical motif in lunasin could explain the specific
targeting of the peptide to deacetylated chromatin. Its absence from the NLS-trLunasin
20 peptide reduced the binding to deacetylated H4 significantly, despite the presence of the poly-
aspartyl end (Fig. 9). However, the presence of both helix and poly-aspartyl end was
necessary for binding to deacetylated H4 (Fig. 9) and for the anti-transformation property of
the truncated lunasin (trLunasin) peptide (Fig. 11). The poly-aspartyl end attached to this
helical motif at the carboxyl end appears to be important for the anti-carcinogenic property
25 of lunasin. Although the helical motif is necessary for targeting the lunasin peptide to
deacetylated histones, it is the acidic poly-aspartyl end that interacts with the positively
charged non-acetylated lysine residues in the histone N-terminal tails preventing them from
being acetylated. It should also be pointed out that trLunasin has a lower binding affinity to
deacetylated H4 than the full-length lunasin peptide (Fig. 9). This observation correlates with

the reduced efficacy of trLunasin in preventing foci transformation (Fig. 12). This result provides evidence linking the binding affinity of lunasin to deacetylated histones and its anti-transformation property in vivo, preferably in a human being.

(b) Similarly when the reaction involving lunasin (SEQ.ID.1 of 43 amino acids) of step (a) is repeated except that the lunasin is replaced by a stoichiometrically equivalent and active
5 fragment selected from:

- protein having amino acids 1 to 42 (SEQ. ID.2),
- protein having amino acids 1 to 41 (SEQ. ID.3),
- protein having amino acids 1 to 40 (SEQ. ID.4),
- protein having amino acids 1 to 39 (SEQ. ID.5),
- 10 protein having amino acids 1 to 38 (SEQ. ID.6).
- protein having amino acids 22 to 43 (SEQ. ID.7),
- protein having amino acids 22 to 42 (SEQ. ID.8),
- protein having amino acids 22 to 41 (SEQ. ID.9),
- protein having amino acids 22 to 40 (SEQ. ID.10),
- 15 protein having amino acids 22 to 39 (SEQ. ID.11), and
- protein having amino acids 22 to 38 (SEQ. ID.12),

a corresponding useful therapeutic result is obtained in cancer inhibition and in reduction of cancer activity in vivo.

20

EXAMPLE 2

INHIBITION OF IN VIVO ACETYLATION

(a) Lunasin binding to deacetylated histones inhibits *in vivo* acetylation of histone H3 and H4

The *in vitro* binding of lunasin to deacetylated histone H4 confirms the observed affinity
25 of lunasin to regions of hypoacetylated chromatin such as the centromeres and telomeres in immunostaining experiments (Galvez and de Lumen, 1999 and Fig. 6). Deacetylated histones are substrates for histone acetylation and for chromatin remodelling which has been associated with eukaryotic transcriptional regulatory mechanisms (K. Struhl, *Genes Dev.*, vol. 12, 599,1998; M. Grunstein, *Nature*, vol. 389, 349, 1997). To determine whether the preferential

binding of lunasin to deacetylated histones has any biochemical effect on histone acetylation *in vivo*, C3H cells and the human breast cancer cell line, MCF-7, were treated with the histone deacetylase inhibitor, Na-butyrate (E.P. Candido, R. Reeves, J.R. Davie, *Cell*, vol. 14, 105,1978), in the presence or absence of lunasin. Immunoblots of acid-extracted proteins show the significant reduction of acetylated H4 and H3 in Na-butyrate treated C3H and MCF-7 cells when pretreated with 1 μ M of lunasin peptide (Fig. 13). The absence of lunasin when cells were treated with Na-butyrate increased histone H4 acetylation by 200 fold in both C3H and MCF-7 cells. H3 acetylation induced by Na-butyrate treatment increased 100 fold in C3H cells and around 400 fold in MCF-7 cells. Upon addition of lunasin, there was no observed increase in H4 and H3 acetylation of C3H cells treated with Na-butyrate. In MCF-7 cells, H4 acetylation was reduced 10 fold and H3 acetylation 4 fold when lunasin was added prior to Na-butyrate treatment. These results demonstrate that the exogenous application of the lunasin peptide inhibit histone acetylation of mammalian cells *in vivo*, preferably in a human being.

(b) Similarly when the reaction involving lunasin (SEQ.ID.1 of 43 amino acids) of step (a) is repeated except that the lunasin is replaced by a stoichiometrically equivalent and active fragment selected from:

- protein having amino acids 1 to 42 (SEQ. ID.2),
- protein having amino acids 1 to 41 (SEQ. ID.3),
- protein having amino acids 1 to 40 (SEQ. ID.4),
- protein having amino acids 1 to 39 (SEQ. ID.5),
- protein having amino acids 1 to 38 (SEQ. ID.6).
- protein having amino acids 22 to 43 (SEQ. ID.7),
- protein having amino acids 22 to 42 (SEQ. ID.8),
- protein having amino acids 22 to 41 (SEQ. ID.9),
- protein having amino acids 22 to 40 (SEQ. ID.10),
- protein having amino acids 22 to 39 (SEQ. ID.11), and
- protein having amino acids 22 to 38 (SEQ. ID.12),

a corresponding useful therapeutic result is obtained in cancer inhibition and in reduction of existing cancer activity *in vivo*, preferably in a human being.

While only a few general embodiments of the invention have been shown and described herein, it will become apparent to those skilled in the art that various modifications and changes can be made in the application of lunasin and lunasin analogs and active lunasin fragments thereof to treat existing tumors or prevent initiation of tumor formation without departing from the spirit and scope of the present invention. All such modifications and changes coming within the scope of the appended claims are intended to be carried out
5 thereby.

I CLAIM:

1. A method of cancer treatment or prevention, which method comprises:
 - A. Administering to a mammalian subject having tumor cells in need of therapy or a mammalian subject at risk to carcinogen or oncogene-mediated cancer formation an effective amount of an isolated and purified therapeutic agent
5 selected from the group consisting of lunasin peptide, an active fragment of lunasin peptide, an active lunasin peptide analog and combinations thereof which lunasin moiety has a helical portion which the structural motif (ED)NNXXXEK(IV), where E is glutamic acid, D is aspartic acid, K is lysine, I is isoleucine, V is valine, X is selected from conserved hydrophobic amino
10 acids and N is any amino acid, a sequence of at least 5 to about 15 poly-acidic amino acids selected from glutamic acid or aspartic acid, and an Arg-Gly-Asp (RGD) motif which is useful for targeting and binding to non-acetylated N-terminal tails of H4 and H3 histones and for functional adhesion of lunasin moiety to the outer cell membrane;
 - 15 B. Causing the lunasin peptide, the active fragment of lunasin peptide, the active lunasin peptide analog or combinations thereof to contact and to adhere to the functional cell membrane;
 - C. Causing the lunasin peptide, the active fragment of lunasin peptide, the active lunasin peptide analog or combinations thereof to become internalized within
20 the functioning cell;
 - D. Causing the lunasin peptide, the active fragment of lunasin peptide, the active lunasin peptide analog or combinations thereof to preferentially bind to the deacylated N-terminal portions of histone H3 and H4, causing these histones to be unavailable for further acylation in regions of the chromosomes of the
25 cell and which are enriched with hypoacetylated repressed chromatin;
 - E. Inducing apoptosis of the cell by repression of carcinogen-mediated gene transformation within the cell, which results in significantly reduced or termination of cancer activity of existing tumor cells or the prevention of significant tumor cell initiation.

2. The method of claim 1 wherein the mammal is a human being.
3. The method of Claim 1 wherein the method is one of treating an already existing cancer.
4. The method of claim 1 wherein the method is one of preventing or repressing the induction of cancer.
- 5 5. The method of Claim 1 wherein the therapeutic agent comprises lunasin peptide.
6. The method of Claim 1 wherein the therapeutic agent comprises an active fragment of lunasin peptide.
7. The method of Claim 6 wherein the active fragment of lunasin is selected from the group consisting of:
 - 10 protein having amino acids 1 to 42 (SEQ. ID.2),
 - protein having amino acids 1 to 41 (SEQ. ID.3),
 - protein having amino acids 1 to 40 (SEQ. ID.4),
 - protein having amino acids 1 to 39 (SEQ. ID.5),
 - protein having amino acids 1 to 38 (SEQ. ID.6).
 - 15 protein having amino acids 22 to 43 (SEQ. ID.7),
 - protein having amino acids 22 to 42 (SEQ. ID.8),
 - protein having amino acids 22 to 41 (SEQ. ID.9),
 - protein having amino acids 22 to 40 (SEQ. ID.10),
 - protein having amino acids 22 to 39 (SEQ. ID.11),
 - 20 protein having amino acids 22 to 38 (SEQ. ID.12), and combinations thereof.
8. The method of Claim 1 wherein the therapeutic agent comprises an active analog of lunasin peptide.
9. The method of Claim 1 wherein the therapeutic dose is about 250 microgram per milliliter or per gram of solid dose to about 2.5 milligram per milliliter or per gram of solid
25 dose.

10. The method of Claim 1 wherein the therapeutic agent is administered orally, topically, intranasally, intramuscularly, subcutaneously, intraperitoneally, buccally intravenously or combinations of these methods.
11. The method of Claim 1 wherein the therapeutic agent is administered topically in a pharmaceutically acceptable excipient.
- 5 12. The method of Claim 1 wherein the therapeutic agent is administered orally.
13. A pharmaceutical composition which comprises a lunisin peptide, an active fragment of lunasin peptide, an active lunasin peptide analog or combinations thereof and a pharmaceutically acceptable excipient.
14. The pharmaceutical composition of Claim 13 which comprises a lunisin peptide
10 and a pharmaceutically acceptable excipient.
15. The pharmaceutical composition of Claim 13 which comprises an active fragment of lunasin peptide, and a pharmaceutically acceptable excipient.
16. The pharmaceutical composition of Claim 13 wherein the active fragment of lunasin peptide is selected from the group consisting of:
- 15 protein having amino acids 1 to 42 (SEQ. ID.2),
protein having amino acids 1 to 41 (SEQ. ID.3),
protein having amino acids 1 to 40 (SEQ. ID.4),
protein having amino acids 1 to 39 (SEQ. ID.5),
protein having amino acids 1 to 38 (SEQ. ID.6).
20 protein having amino acids 22 to 43 (SEQ. ID.7),
protein having amino acids 22 to 42 (SEQ. ID.8),
protein having amino acids 22 to 41 (SEQ. ID.9),
protein having amino acids 22 to 40 (SEQ. ID.10),
protein having amino acids 22 to 39 (SEQ. ID.11),
25 protein having amino acids 22 to 38 (SEQ. ID.12), and combinations thereof.
17. The pharmaceutical composition of Claim 13 which comprises an active lunasin peptide analog and a pharmaceutically acceptable excipient.

18. The pharmaceutical composition of Claim 13 wherein the therapeutic dose is about 250 microg per milliliter or per gram of solid dose to about 2.5 millig per milliliter or per gram of solid dose.

19. The pharmaceutical composition of Claim 13 wherein said pharmaceutical composition is administered orally, topically, intranasally, intramuscularly, subcutaneously, 5 intrapertineally, buccally or combinations of these methods.

20. The pharmaceutical composition of Claim 13 wherein said pharmaceutical composition is administered topically to retard or stop cancers of the skin.

21. The pharmaceutical composition of Claim 13 wherein said pharmaceutical composition is administered intranasally or as part of inhalation therapy to retard or stop 10 cancers of the lung.

22. The pharmaceutical composition of Claim 13 wherein said pharmaceutical composition is administered intravenously to retard or stop cancers of the breast, prostate, liver, kidney or any other internal organs or tissues.

23. The pharmaceutical composition of Claim 13 wherein said pharmaceutical composition is administered is a vaginal suppository to retard or stop cancers of the cervix, 15 uterus or ovary.

24. The pharmaceutical composition of Claim 13 wherein said pharmaceutical composition is administered as an anally applied suppository to retard or stop cancers of the lower gastro-intestinal tract.

25. The pharmaceutical composition of Claim 13 wherein said pharmaceutical composition is administered orally to retard or stop cancers of the colon, upper gastrointestinal tract, breast, prostate, liver, kidney or any other internal organs or tissues. 20

26. The pharmaceutical composition of Claim 13 wherein said pharmaceutical composition is administered intramuscularly or subcutaneously as a general protection against 25 cancer development in internal organs.

27. The pharmaceutical composition of any of Claims 19 to 26 wherein the active fragment of lunasin peptide is selected from the group consisting of:

protein having amino acids 1 to 42 (SEQ. ID.2),

protein having amino acids 1 to 41 (SEQ. ID.3),

protein having amino acids 1 to 40 (SEQ. ID.4),
protein having amino acids 1 to 39 (SEQ. ID.5),
protein having amino acids 1 to 38 (SEQ. ID.6).
protein having amino acids 22 to 43 (SEQ. ID.7),
protein having amino acids 22 to 42 (SEQ. ID.8),
5 protein having amino acids 22 to 41 (SEQ. ID.9),
protein having amino acids 22 to 40 (SEQ. ID.10),
protein having amino acids 22 to 39 (SEQ. ID.11), and
protein having amino acids 22 to 38 (SEQ. ID.12),

28. The pharmaceutical composition of any of Claims 19 to 26 wherein the
10 therapeutic dose is about 250 microgram per milliliter or per gram of solid dose to about 2.5
milligram per milliliter or per gram of solid dose.

15

Expression Pattern of Lunasin

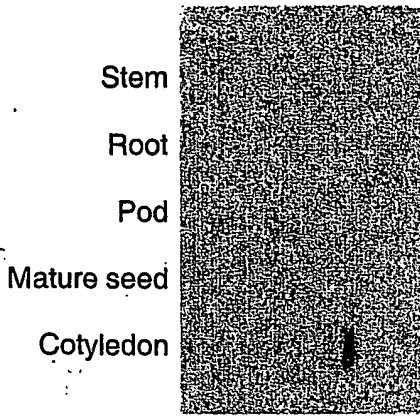
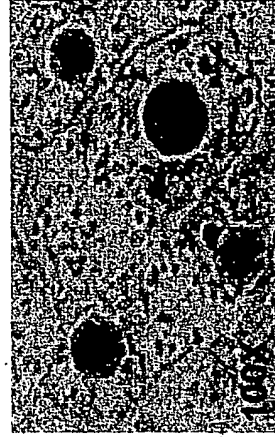


FIG. 1B

Immunolocalization of Lunasin



Lunasin immunostain (arrows=Lunasin co-localizing with endoreduplicated DNA)

FIG. 1E

Expression Pattern of Lunasin

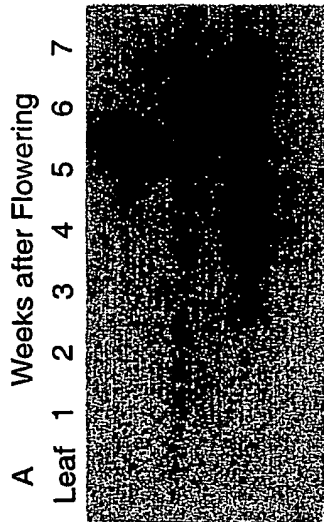
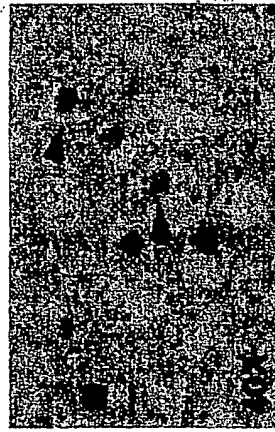


FIG. 1A

Immunolocalization of Lunasin



Lunasin immunostain (arrows=Lunasin co-localizing with endoreduplicated DNA)

FIG. 1D

Immunolocalization of Lunasin



Histochemical stain (arrows=endoreduplicated DNA)

FIG. 1C

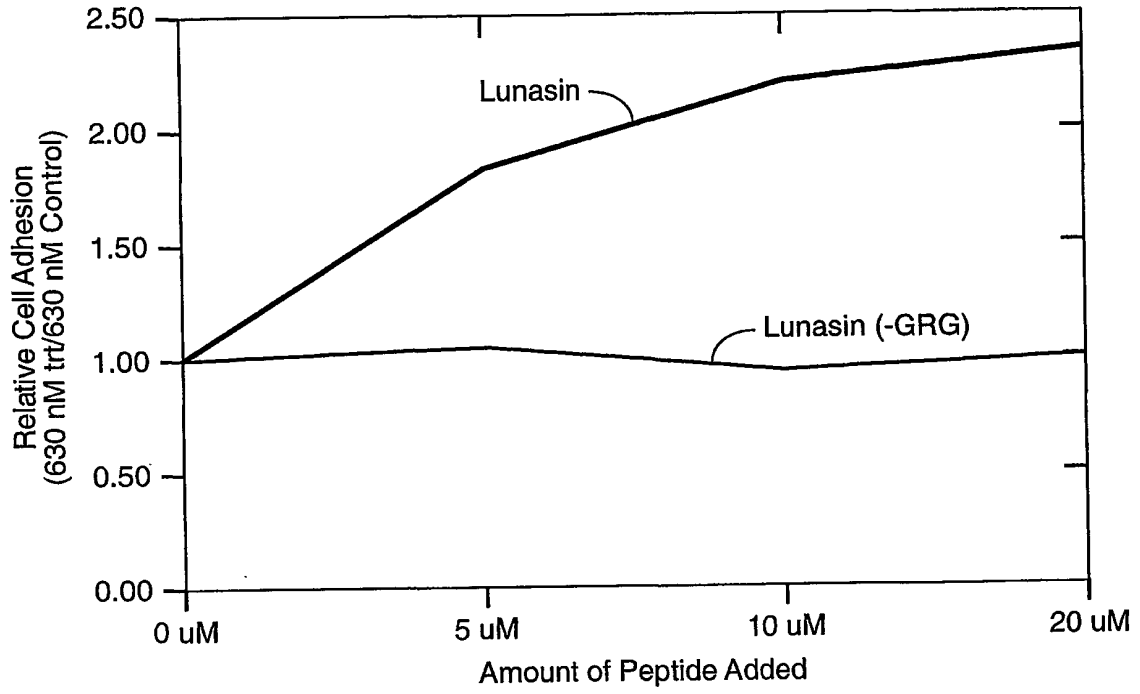


FIG. 2

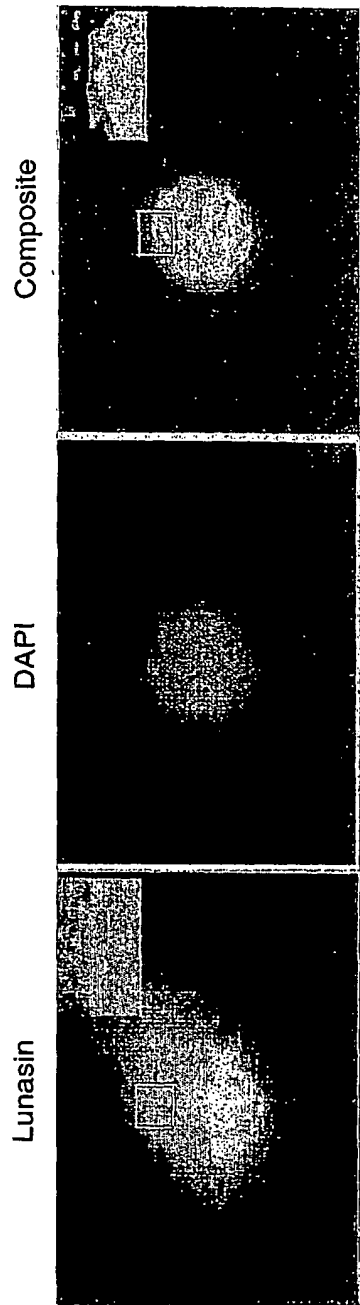


FIG._3A

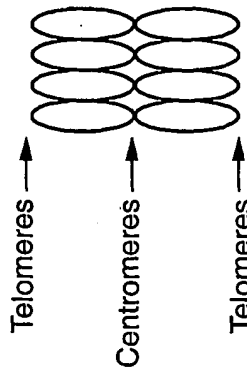
FIG._3B

FIG._3C



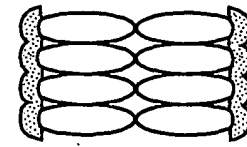
Lunasin

FIG._3D



Chromosomes

FIG._3E



Lunasin + Chromosomes

FIG._3F

4 / 13

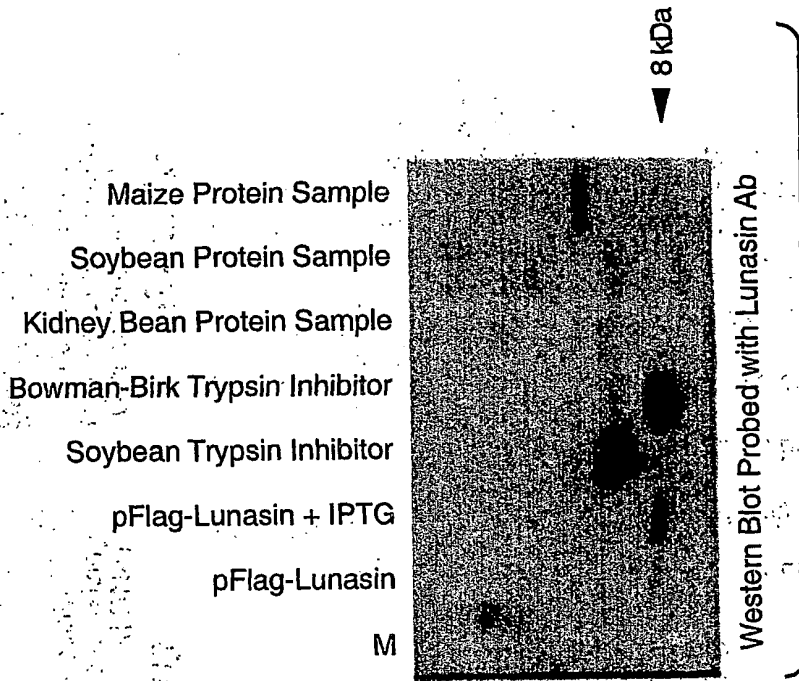


FIG. 4B

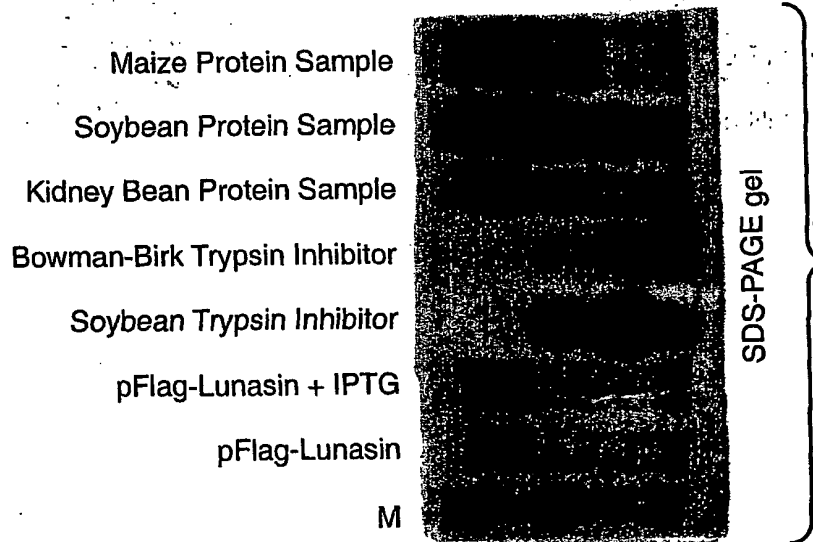


FIG. 4A

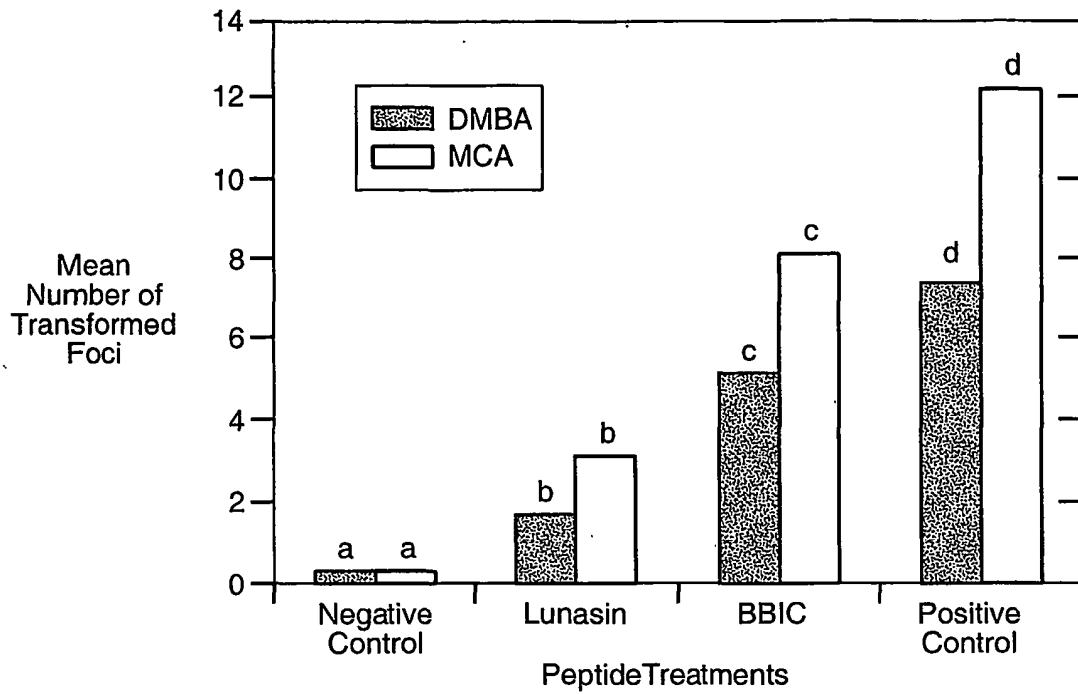


FIG. 5

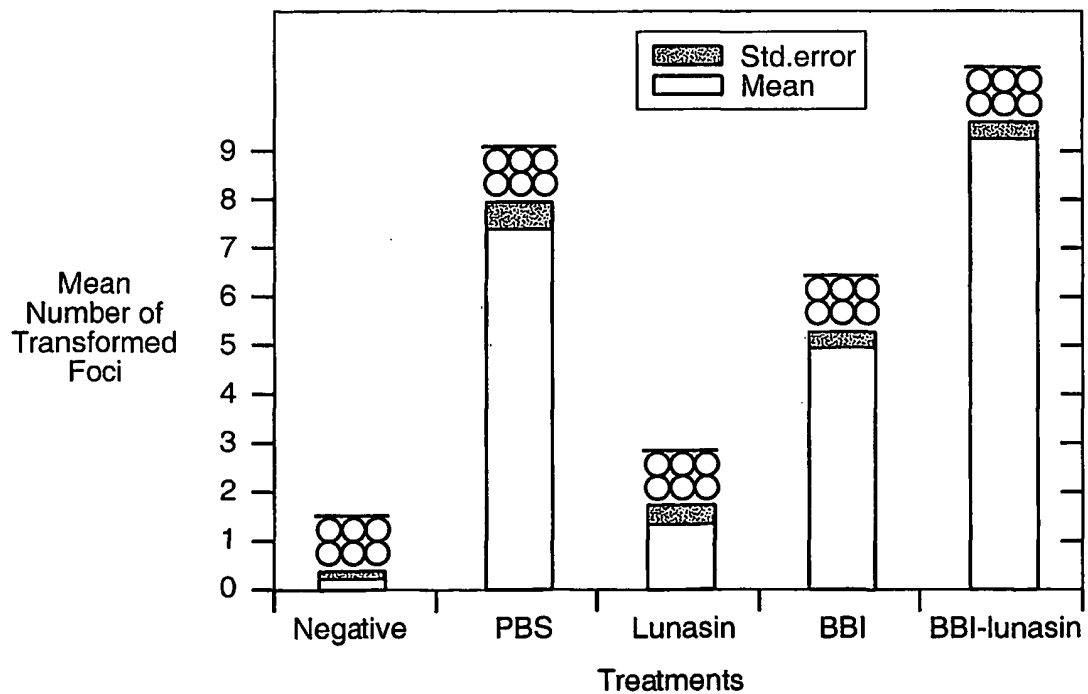


FIG. 6

FIG. 7A

E1A-ΔCR1



FIG. 7B

E1A-ΔCR1 + Lunasin



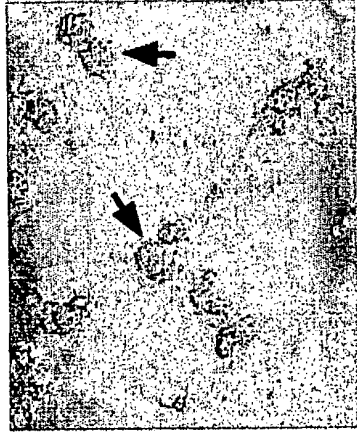
FIG. 7C

E1A-wt



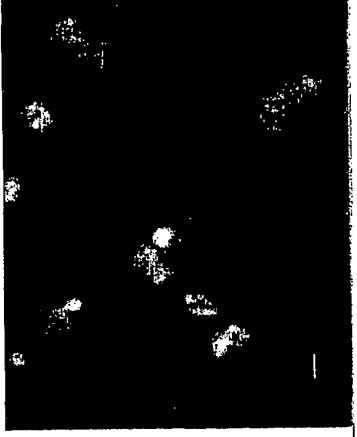
E1A-wt + Lunasin

FIG. 7D



Phase Contrast

FIG. 7E



Annexin V-FITC

FIG. 7F

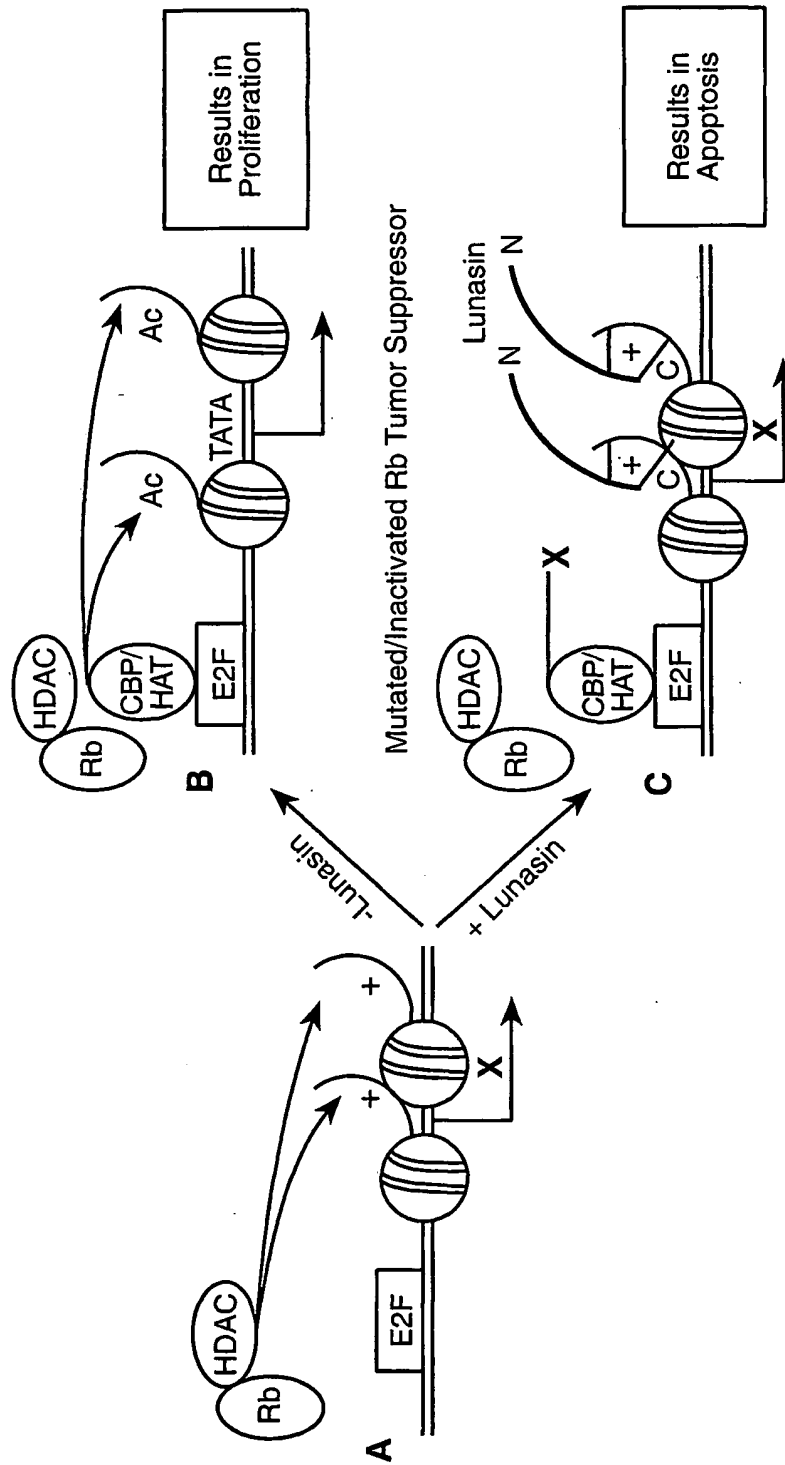


FIG.-8

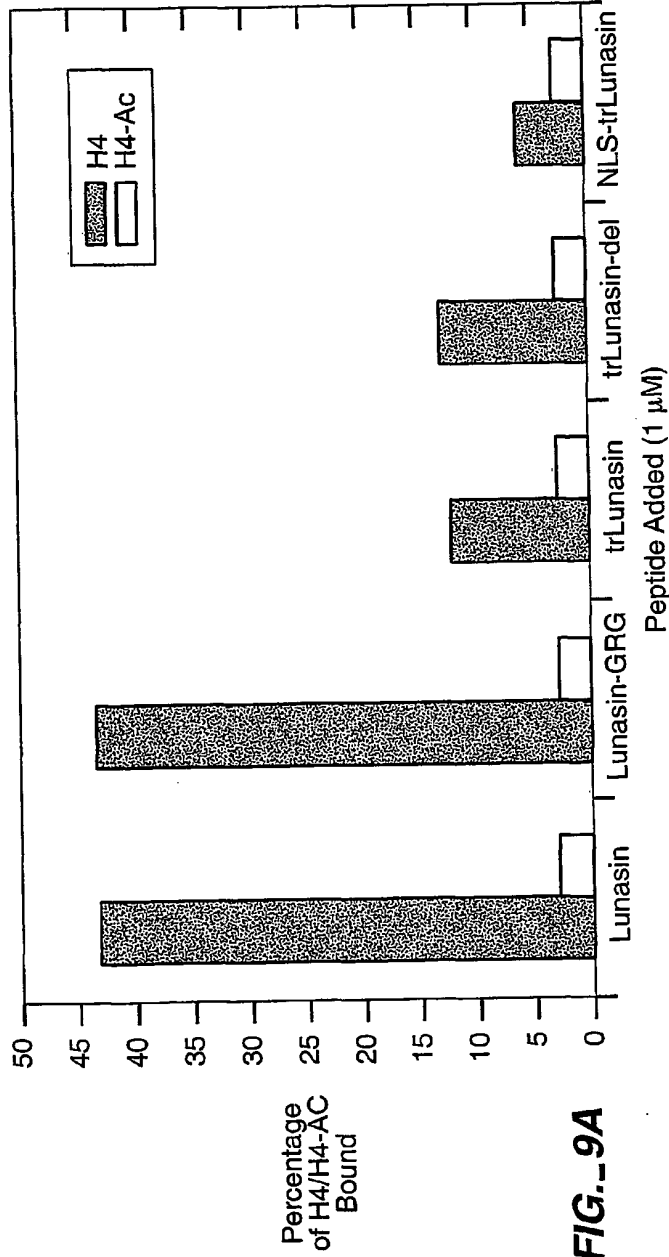


FIG. 9A

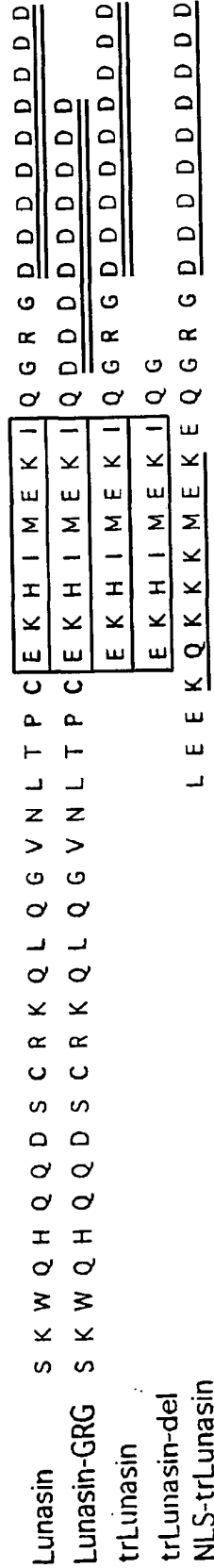


FIG. 9B

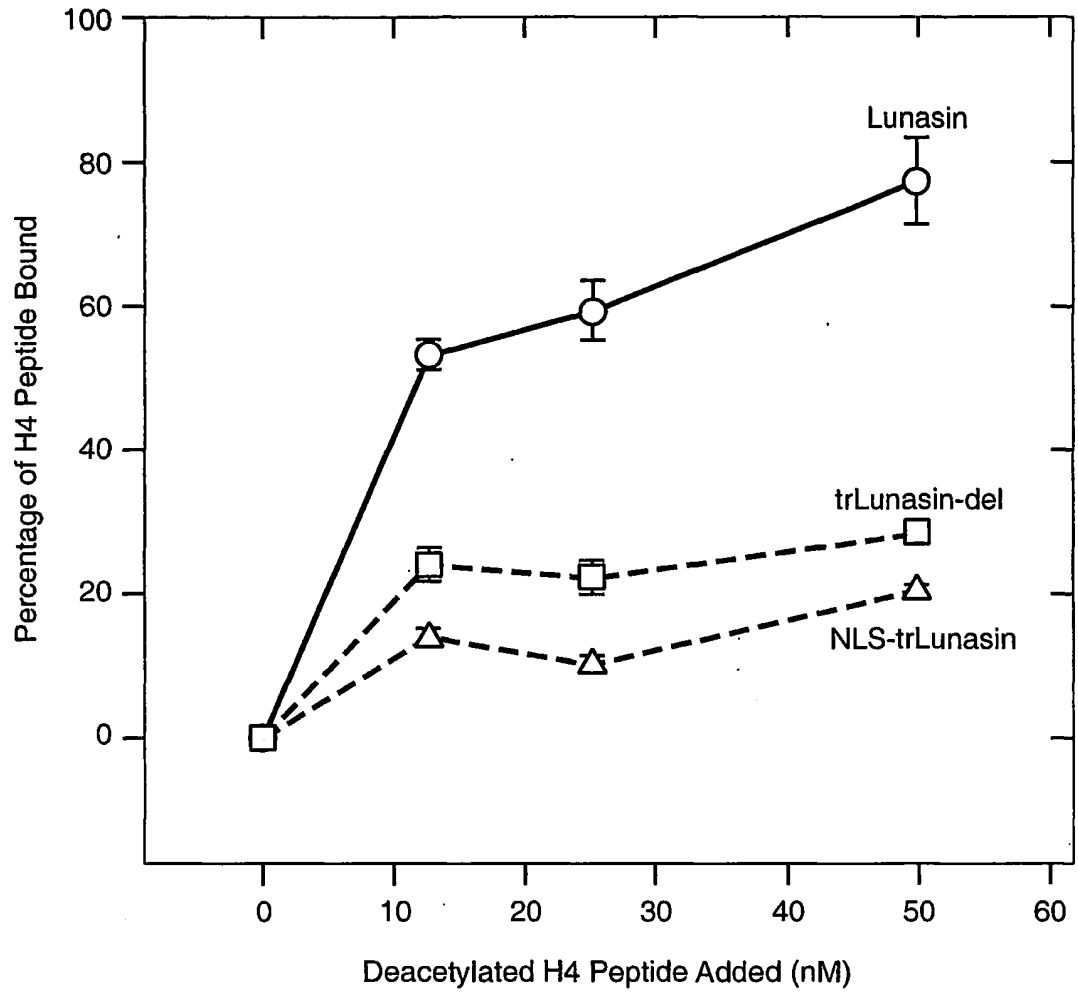
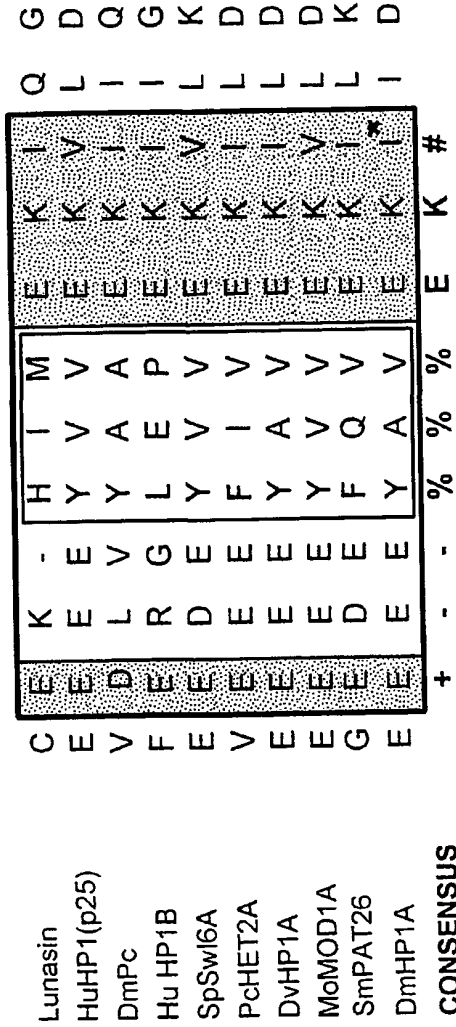


FIG. 10



highly conserved hydrophobic amino acid

% conserved hydrophobic amino acid

+ highly conserved acidic amino acid

* natural mutation from I to F leads to loss of chromatin targeting

FIG.--11

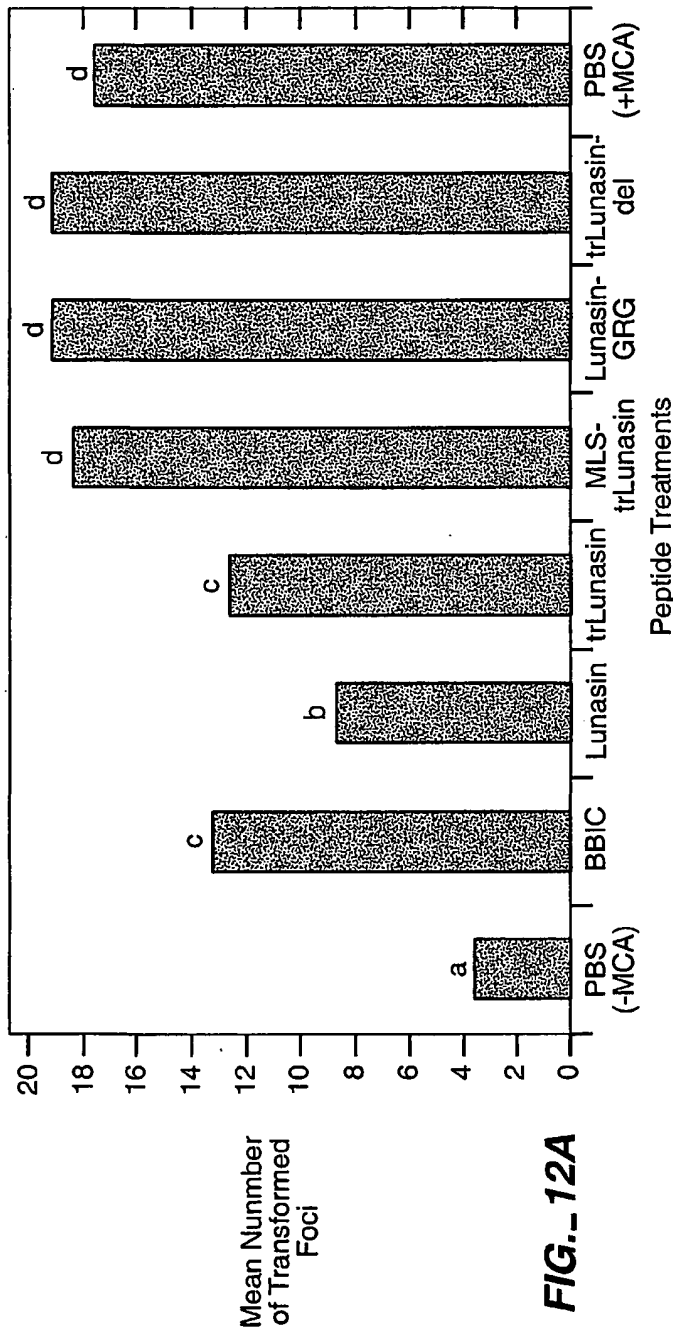
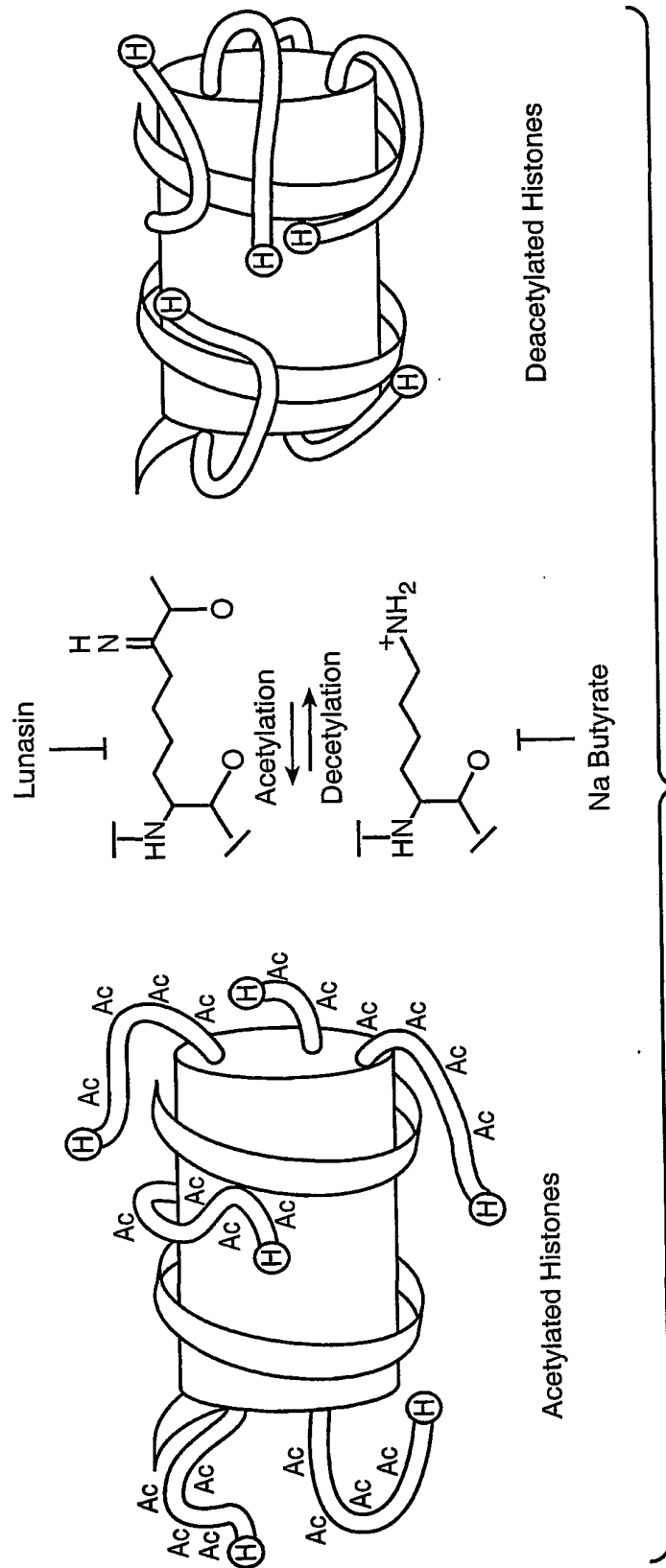


FIG. 12A

Peptide Treatment	Sequence
Lunasin	S K W Q H Q Q D S C R K Q L Q G V N L T P C
Lunasin-GRG	S K W Q H Q Q D S C R K Q L Q G V N L T P C
trLunasin	E K H I M E K I
trLunasin-del	E K H I M E K I
NLS-trLunasin	E K H I M E K I
	L E E K Q K K K M E K E
	Q G R G D D D D D D D D D D
	Q G R G D D D D D D D D D D
	Q G R G D D D D D D D D D D
	Q G R G D D D D D D D D D D
	Q G R G D D D D D D D D D D
	Q G R G D D D D D D D D D D
	Q G R G D D D D D D D D D D
	Q G R G D D D D D D D D D D
	Q G R G D D D D D D D D D D
	Q G R G D D D D D D D D D D

FIG. 12B



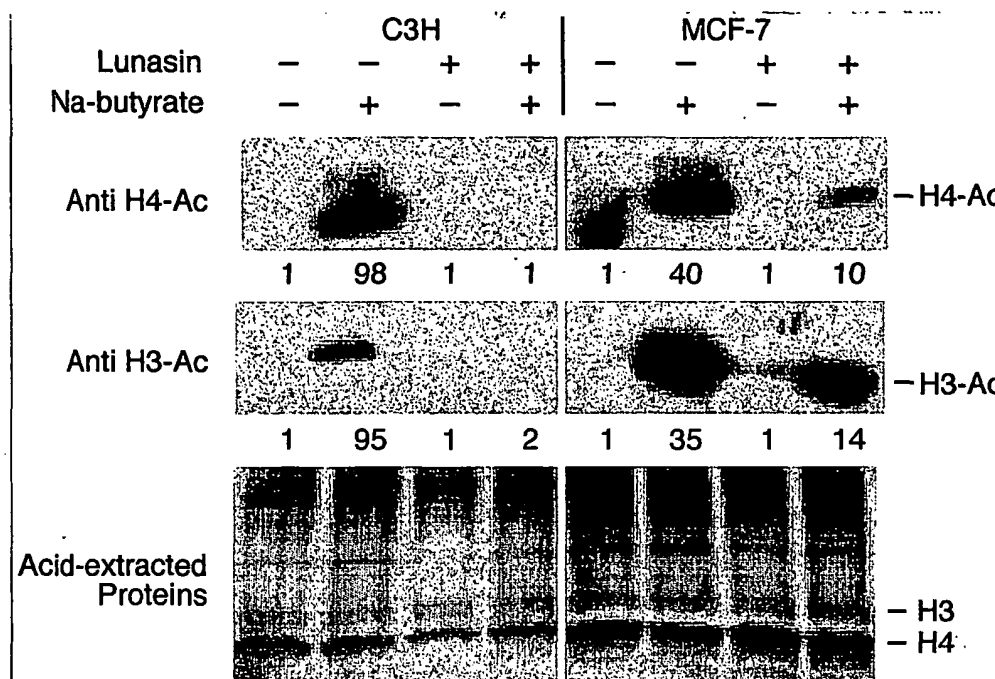


FIG. 13B

SEQUENCE LISTING

<110> FILGEN BIOSCIENCES, INC.

<120> THERAPEUTIC PEPTIDES HAVING A MOTIF THAT BINDS SPECIFICALLY TO NON-ACETYLATED H3 AND H4 HISTONES FOR CANCER THERAPY

<130> 3729.02-1PCT (HMP)

<140> PCT/US01/09453

<141> 2001-03-23

<150> 09/534,705

<151> 2000-03-24

<160> 28

<170> PatentIn Ver. 2.1

<210> 1

<211> 43

<212> PRT

<213> Glycine max

<400> 1

Ser Lys Trp Gln His Gln Gln Asp Ser Cys Arg Lys Gln Leu Gln Gly
 1 5 10 15

Val Asn Leu Thr Pro Cys Glu Lys His Ile Met Glu Lys Ile Gln Gly
 20 25 30

Arg Gly Asp Asp Asp Asp Asp Asp Asp Asp Asp
 35 40

<210> 2

<211> 42

<212> PRT

<213> Glycine max

<400> 2

Ser Lys Trp Gln His Gln Gln Asp Ser Cys Arg Lys Gln Leu Gln Gly
 1 5 10 15

Val Asn Leu Thr Pro Cys Glu Lys His Ile Met Glu Lys Ile Gln Gly
 20 25 30

Arg Gly Asp Asp Asp Asp Asp Asp Asp Asp
 35 40

<210> 3

<211> 41

<212> PRT

<213> Glycine max

2/10

<400> 3

Ser Lys Trp Gln His Gln Gln Asp Ser Cys Arg Lys Gln Leu Gln Gly
 1 5 10 15

Val Asn Leu Thr Pro Cys Glu Lys His Ile Met Glu Lys Ile Gln Gly
 20 25 30

Arg Gly Asp Asp Asp Asp Asp Asp Asp
 35 40

<210> 4

<211> 40

<212> PRT

<213> Glycine max

<400> 4

Ser Lys Trp Gln His Gln Gln Asp Ser Cys Arg Lys Gln Leu Gln Gly
 1 5 10 15

Val Asn Leu Thr Pro Cys Glu Lys His Ile Met Glu Lys Ile Gln Gly
 20 25 30

Arg Gly Asp Asp Asp Asp Asp Asp
 35 40

<210> 5

<211> 39

<212> PRT

<213> Glycine max

<400> 5

Ser Lys Trp Gln His Gln Gln Asp Ser Cys Arg Lys Gln Leu Gln Gly
 1 5 10 15

Val Asn Leu Thr Pro Cys Glu Lys His Ile Met Glu Lys Ile Gln Gly
 20 25 30

Arg Gly Asp Asp Asp Asp Asp
 35

<210> 6

<211> 38

<212> PRT

<213> Glycine max

<400> 6

Ser Lys Trp Gln His Gln Gln Asp Ser Cys Arg Lys Gln Leu Gln Gly
 1 5 10 15

Val Asn Leu Thr Pro Cys Glu Lys His Ile Met Glu Lys Ile Gln Gly
 20 25 30

Arg Gly Asp Asp Asp Asp
 35

3/10

<210> 7
<211> 22
<212> PRT
<213> Glycine max

<400> 7
Cys Glu Lys His Ile Met Glu Lys Ile Gln Gly Arg Gly Asp Asp Asp
1 5 10 15

Asp Asp Asp Asp Asp Asp
20

<210> 8
<211> 21
<212> PRT
<213> Glycine max

<400> 8
Cys Glu Lys His Ile Met Glu Lys Ile Gln Gly Arg Gly Asp Asp Asp
1 5 10 15

Asp Asp Asp Asp Asp
20

<210> 9
<211> 20
<212> PRT
<213> Glycine max

<400> 9
Cys Glu Lys His Ile Met Glu Lys Ile Gln Gly Arg Gly Asp Asp Asp
1 5 10 15

Asp Asp Asp Asp
20

<210> 10
<211> 19
<212> PRT
<213> Glycine max

<400> 10
Cys Glu Lys His Ile Met Glu Lys Ile Gln Gly Arg Gly Asp Asp Asp
1 5 10 15

Asp Asp Asp

<210> 11
<211> 18
<212> PRT
<213> Glycine max

4/10

<400> 11

Cys Glu Lys His Ile Met Glu Lys Ile Gln Gly Arg Gly Asp Asp Asp
 1 5 10 15

Asp Asp

<210> 12

<211> 17

<212> PRT

<213> Glycine max

<400> 12

Cys Glu Lys His Ile Met Glu Lys Ile Gln Gly Arg Gly Asp Asp Asp
 1 5 10 15

Asp

<210> 13

<211> 129

<212> DNA

<213> Glycine max

<400> 13

tccaaatggc agcaccagca agatagctgc cgcaagcagc tccagggggc gaacctcagc 60
 ccctgcgaga agcacatcat ggagaagatc caaggccgcg gcgatgacga tgatgatgat 120
 gacgacgac 129

<210> 14

<211> 9408

<212> DNA

<213> Glycine max

<400> 14

agatctaaca tccaaagacg aaagggtgaa tgaaaccttt ttgccatccg acatccacag 60
 gtccattctc acacataagt gccaaacgca acaggagggg atacactagc agcagaccgt 120
 tgcaaacgca ggacctccac tcctcttctc ctcaacaccc acttttgcca tcgaaaaacc 180
 agcccagtta ttgggcttga ttggagctcg ctcatccaa ttccttctat taggctacta 240
 acaccatgac ttatttagcc tgtctatcct ggccccctg gcgaggttca tgtttgttta 300
 tttccgaatg caacaagctc cgcattacac cegaacatca ctccagatga gggctttctg 360
 agtgtggggc caaatagttt catgttcccc aaatggccca aaactgacag tttaaagcgt 420
 gtcttggaac ctaatatgac aaaagcgtga tctcatccaa gatgaactaa gtttggttcg 480
 ttgaaatgct aacggccagt tggc caaaaa gaaactcca aaagtccca taccgtttgt 540
 cttgtttggg attgattgac gaatgctcaa aaataatctc attaatgctt agcgcagtct 600
 ctctatcgct tctgaacccc ggtgcacctg tgccgaaacg caaatgggga aacacccgct 660
 ttttggatga ttatgcattg tctccacatt gtatgcttcc aagattctgg tgggaatact 720
 gctgatagcc taacgttcat gatcaaaatt taactgttct aaccctact tgacagcaat 780
 atataaacag aaggaagctg ccctgtctta aaccttttt tttatcatca ttattagctt 840
 actttcataa ttgcgactgg ttccaattga caagcttttg attttaacga cttttaacga 900
 caacttgaga agatcaaaaa acaactaatt attcgaagga tccaaacgat gagatttctt 960
 tcaattttta ctgcagtttt attcgcagca tcctccgcat tagctgctcc agtcaacact 1020
 acaacagaag atgaaacggc acaaattccg gctgaagctg tcatcggtta ctcagattta 1080
 gaaggggatt tcgatgttgc tgttttgcca tttccaaca gcacaaataa cgggttattg 1140
 tttataaata ctactattgc cagcattgct gctaaagaag aaggggtatc tctcgagaaa 1200

agagaggctg aagcttacgt atccaaatgg cagcaccage aagatagctg ccgcaagcag 1260
 ctccaggggg tgaacctcac gccctgcgag aagcacatca tggagaagat ccaaggccgc 1320
 ggcgatgacg atgatgatga tgacgacgac taagaattcc ctagggcggc cgcgaaattaa 1380
 ttgccttag acatgactgt tcctcagttc aagttgggca cttacgagaa gaccggctctt 1440
 gctagattct aatcaagagg atgtcagaat gccatttgcc tgagagatgc aggcttcatt 1500
 tttgatactt ttttatttgt aacctatata gtataggatt ttttttgtca ttttgtttct 1560
 tctcgtacga gcttgctcct gatcagccta tctcgcagct gatgaatata ttgtggtagg 1620
 ggtttgggaa aatcattcga gtttgatggt tttcttggtta tttcccactc ctcttcagag 1680
 tacagaagat taagtggaaa gttcgtttgt gcaagcttat cgataagctt taatgcggtta 1740
 gtttatcaca gttaaattgc taacgcagtc aggcaccgtg tatgaaatct aacaatgcgc 1800
 tcacgtcat cctcggcacc gtcaccctgg atgctgtagg cataggcttg gttatgccgg 1860
 tactgccggg cctccttgcgg gatatcgtcc attccgacag catcgccagt cactatggcg 1920
 tgctgctagc gctatatgcg ttgatgcaat ttctatgcgc acccgttctc ggagcactgt 1980
 ccgaccgctt tggccgcccgc ccagtcctgc tcgcttcgct acttggagcc actatcgact 2040
 acgcatcat ggcgaccaca cccgtcctgt ggatctatcg aatctaaatg taagttaaaa 2100
 tctctaaata attaaataag tcccagtttc tccatacгаа ccttaacagc attgvcggtga 2160
 gcatctagac cttcaacagc agccagatcc atcactgctt ggccaatag tttcagttcc 2220
 tcaggagtta cgtcttgga agtgatgaac ttctggaaagg ttgcagtgtt aactccgctg 2280
 tattgacggg catatccgta cgttggcaaa gtgtgggttg taccggagga gtaatctcca 2340
 caactctctg gagagtaggc accaacaac acagatccag cgtggtgtac ttgatcaaca 2400
 taagaagaag cattctcgat ttgcaggatc aagtgttcag gagcgtactg attggacatt 2460
 tccaaagcct gctcgtaggt tgcaaccgat agggttgtag agtvtgcaat acacttgcgt 2520
 acaatttcaa ccttggcaa ctgcacagct tggttgtgaa cagcatctc aattctggca 2580
 agtccttgt ctgtcatatc gacagccaac agaatcacct gggaaatcaat accatgttca 2640
 gcttgagaca gaaggtctga ggcaacgaaa tctggatcag cgtatttatc agcaataact 2700
 agaacttcag aaggcccagc aggcattgca atactacaca gggctgatgt gtcattttga 2760
 accatcatct tggcagcagt aacgaactgg tttcctggac caaatatttt gtcacactta 2820
 ggaacagttt ctggtccgta agccatagca gctactgcct gggcgcctcc tgctagcacg 2880
 atacacttag caccaacctt gtgggcaacg tagatgactt ctggggtaag ggtaccatcc 2940
 ttcttaggtg gagatgcaaa aacaatttct ttgcaaccag caactttggc aggaacaccc 3000
 agcatcaggg aagtggaaagg cagaattgcg gttccaccag gaatatagag gccaaacttc 3060
 tcaataggtc ttgcaaaaac agagcagact acaccagggc aagtctcaac ttgcaacgtc 3120
 tccgttagtt gagcttcctg gaatttcctg acgttatcta tagagagatc aatggctctc 3180
 ttaacgttat ctggcaattg cataagttcc tctgggaaag gagcttctaa cacaggtgtc 3240
 ttcaaaagca ctccatcaaa cttggcagtt agttctaaaa gggctttgtc accattttga 3300
 cgaacattgt cgacaattgg tttgactaat tccataatct gttccgtttt ctggatagga 3360
 cgacgaaggg catcttcaat ttcttgtgag gaggccttag aaacgtcaat tttgcacaat 3420
 tcaatacgac cttcagaagg gacttcttta ggtttggatt ctctcttagg ttgttccttg 3480
 gtgtatcctg gcttggcatc tccttccct ctagtgcct ttagggactt catatccagg 3540
 tttctctcca cctcgtccaa cgtcacaccg tacttggcac atctaactaa tgcaaaataa 3600
 aataagtcag cacattccca ggetatatct tccttggatt tagcttctgc aagttcatca 3660
 gcttctccc taattttagc gttcaacaaa acttcgtcgt caaataaccg ttgggtataa 3720
 gaaccttctg gagcattgct cttacgatcc cacaaggtgg ctccatggc tetaagacc 3780
 tttgattggc caaaacagga agtgcgttcc aagtgcagaa acccaacacc tgtttgttca 3840
 accacaatt tcaagcagtc tccatcacia tccaattcga taccagcaa cttttgagtt 3900
 gctccagatg tagcaccttt ataccacaaa ccgtgacgac gagattggta gactccagtt 3960
 tgtgtcctta tagcctccgg aatagacttt ttggacgagt acaccaggcc caacgagtaa 4020
 ttagaagagt cagccaccaa agtagtgaat agaccatcgg ggcggtcagt agtcaaagac 4080
 gccaacaaaa tttcactgac agggaaacttt ttgacatct cagaaagttc gtattcagta 4140
 gtcaattgcc gagcatcaat aatggggatt ataccagaag caacagtggg agtcacatct 4200
 accaactttg cggctcaga aaaagcataa acagttctac taccgccatt agtgaactt 4260
 ttcaaatcgc ccagtggaga agaaaaaggc acagcgatac tagcattagc gggcaaggat 4320
 gcaactttat caaccagggt cctatagata accctagcgc ctgggcatc cctttggaca 4380
 actcttctg ccaaatctag gtccaaaatc acttcattga taccattatt gtacaacttg 4440
 agcaagttgt cgatcagctc ctcaaatgg tctctgtaa cggatgactc aacttgcaca 4500
 ttaacttgaa gctcagtcga ttgagtgaac ttgatcaggt tgtgcagctg gtcagcagca 4560
 tagggaaaca cggcttttcc taccaactc aaggaattat caaactctgc aacacttgcg 4620
 tatgcaggta gcaagggaaa tgtcatactt gaagtcggac agtgagtgtg gtcttgagaa 4680

attctgaagc cgtatthtta ttatcagtga gtcagtcac aggagatcct ctacgccgga 4740
cgcatcgtgg ccgacctgca gggggggggg gggcgctgag gtctgcctcg tgaagaaggt 4800
gttctgact cataccaggc ctgaatcgcc ccatcatcca gccagaaagt gaggagacca 4860
cggttgatga gagctttgtt gtaggtggac cagttgggta ttttgaactt ttgctttgcc 4920
acggaacggg ctgctgtgtc ggggaagatgc gtgatctgat ccttcaactc agcaaaagtt 4980
cgatttattc aacaaagccg ccgtcccgtc aagtcagcgt aatgctctgc cagtgttaca 5040
accaattaac caattctgat tagaaaaact catcgagcat caaatgaaac tgcaatttat 5100
tcatatcagg attatcaata ccatatthttt gaaaaagccg tttctgtaat gaaggagaaa 5160
actcaccgag gcagttccat aggatggcaa gatcctggta tcggctctgc attccgactc 5220
gtccaacatc aatacaacct attaathttc cctcgtcaaa aataaggtta tcaagtgaga 5280
aatcaccatg agtgacgact gaatccgggt agaatggcaa aagcttatgc atthctttcc 5340
agacttgthc aacaggccag ccattacgct cgtcatcaaa atcactcgca tcaaccaaac 5400
cgthattcat tcgtgattgc gcctgagcga gacgaaatac gcgatcgtg ttaaaaggac 5460
aattacaaac aggaatcgaa tgcaaccggc gcaggaacac tgccagcgca tcaacaatat 5520
thtcacctga atcaggatat tcttctaata cctggaatgc tgtthtcccg gggatcgca 5580
tggtgagtaa ccatgcatca tcaggagtac ggataaaatg ctgatgggc ggaagagca 5640
taaatccgt cagccagtht agtctgacca thcatctgt aacatcattg gcaacgctac 5700
ctthgccatg thtcagaaac aactctggcg catcgggctt cccatacaat cgatagattg 5760
tcgcacctga thgcccgaca thatcgcgag cctatthata cccatataaa tcagatcca 5820
tgthggaatt taatcgcggc ctcgagcaag acgthtcccg thgaatatgg ctcataaac 5880
cccttgtht actgthtatg taagcagaca gththattgt thcatgatgat atththttat 5940
ctthtgcaat gtaacatcag agatthtgag acacaacgtg gctthcccc cccccctgc 6000
aggctggcat caccggcgcc acagggtgagg thgtggcgcc ctatctgcg gacatcaccg 6060
atggggaaga tcgggctcgc cacttcgggc thcatgagcgc thgtthcggc gtgggtatgg 6120
tggcaggccc cgtggccggg gactgthtg gcgccatctc thtgcagca ccttccttg 6180
cggcgggcgt gctcaacggc ctcaacctac tactgggctg thtctaatg caggagtcg 6240
ataagggaga gcgtcgagta thcatgatth gaagtatggg aatggtgata cccgattct 6300
tcagtgtht gaggtctcct atcagattat gcccaactaa agcaaccgga ggaggagatt 6360
thcatggtaaa thtctctgac ththggthcat cagtagactc gaactgtgag actatctcg 6420
thtatgacagc agaaatgtcc thctthggaga cagthaatga agthcccaca athaagaaat 6480
cctthgtthc aggaacaaac thctthgtthc gaactththc ggtgcctthg actataaaat 6540
gtagatggga thtgccgggt aggaatggag cgggcaaatg thtacctctt ggacctthca 6600
gaggtatgta gggthtgtag atactgatgc caacttcagt gacaacgtth ctatthcgtt 6660
caaacctthc cgaatccaga gaaatcaaag thgtthgtct actatthgat caagccagth 6720
cggctthgaa actgacaata gthgtctcgt gththgaggt catctthgta thgataaatc 6780
tagthctthg thtaaaatth ctthgacgagc caagccgata aatacccaaa thtaaaactc 6840
ththtaaacg thtaaaaggac agtatgtht gcctgthata aaccccaaat cagctcgtag 6900
thtgatctc atcaactthg ggggcaactc ththththtag agaaatthgc ggagatgca 6960
thtcgagaaa aggtacgct gaththaaac thgthaaatth thtcaagatc thtgcctcgc 7020
gctthcgggt gatgacgggt aaaaactctg acacatgacg thtcccggaga cggthcacagc 7080
thgtctgthg gcggatgccc ggagcagaca agcccgtcag ggcgcgtcag cgggtgthtg 7140
cgggtgthcg ggcgacgcca thgaccagtc acgtagcgt agcggagthg atactggct 7200
aactatgccc catcagagca gaththactg agagthgacc atatgcccgtg thgaaataccg 7260
cacagatgcg thagggagaaa ataccgcatc aggcgctct cgcctctcgc gthcactgac 7320
thcgtcgcgt cggctgthc gthgcggcga gcggthcatc thcactcaaa ggcggthata 7380
cggthtatcca cagaatcagg ggataacgca ggaaagaaca thtgagcaaa aggcagca 7440
aaggccagga accgtaaaaa ggcgcgthg ctggcgttht thcataggct cgcctctcgc 7500
gacgagcatc acaaaatcg acgthcaagt cagagthggc gaaacccgac aggactataa 7560
agataccagg cgtthcccc thggaagctc thcgtgctc thcctgthc gacctgccc 7620
ctthaccgat acctgthcgc ththctcct thcgggaagc thgcccctthc thaatgthca 7680
cgctgthaggt atctcagthc ggtgthagth gthctcctca agthgggctg thtgacgaa 7740
cccccgthc agcccagcc thgcccctth thcggtaact atcgtctthg thccaaccg 7800
gthagacagc actthctgcc actggcagca gccactgth acaggtthg cagagcagg 7860
thtgthaggg thgctacaga gthctthgag thgtggcct actacgctc cactagaag 7920
acagatthg thctctgccc thctgthgag ccagthacct thcggaaaaag agthggtagc 7980
ththgatccc gcaaaacaa caccgthggt agcggthggt thththgthg caagcagcag 8040
thtaccgcca gaaaaaagg atctcaagaa gathctthg thththctac ggggtctgac 8100
gthcagthgga acgaaactc acgthtaagg atththgthc thgagattac aaaaaggatc 8160

```

ttcacctaga tccttttaaa ttaaaaaatga agtttttaaat caatctaaag tatatatgag 8220
taaacttggt ctgacagtta ccaatgctta atcagtgagg cacctatctc agcgatctgt 8280
ctatttcggt catccatagt tgcttgactc cccgtcgtgt agataactac gatacgggag 8340
ggcttaccat ctggccccag tgcgtcaatg ataccgagag acccacgctc accggctcca 8400
gatttatcag caataaacca gccagccgga agggccgagc gcagaagtgg tcctgcaact 8460
ttatccgctt ccatccagtc tattaattgt tgccgggaag ctagagtaag tagttcgcca 8520
gttaatagtt tgcgcaacgt tgttgccatt gctgcaggca tcgtgggtgc acgctcgtcg 8580
tttggatagg cttcattcag ctccggttcc caacgatcaa ggcgagttac atgatcccc 8640
atggttgca aaaaagcggg tagctccttc ggtcctccga tcgttgctcag aagtaagttg 8700
gccgcagtgt taccactcat gggtatggca gcaactgcata attctcttac tgtcatgcca 8760
tccgtaagat gcttttctgt gactggtgag tactcaacca agtcattctg agaatagtgt 8820
atgcccgcgac cgagttgctc ttgcccggcg tcaacacggg ataataccgc gccacatagc 8880
agaactttaa aagtgtcat cattggaaaa cgttcttcgg ggcgaaaact ctcaaggatc 8940
ttaccgctgt tgagatccag ttcgatgtaa cccactcgtg cacccaactg atcttcagca 9000
tcttttactt tcaccagcgt ttctgggtga gcaaaaaacag gaaggcaaaa tgccgcaaaa 9060
aagggaataa gggcgacacg gaaatggtga atactcatac tcttcctttt tcaatattat 9120
tgaagcattt atcaggggta ttgtctcatg agcggataca tatttgaatg tatttagaaa 9180
aataaaccaaa taggggttcc ggcacattt ccccgaaaag tgccacctga cgtctaagaa 9240
accattatta tcatgacatt aacctataaa aataggcgta tcacgaggcc ctttcgtctt 9300
caagaattaa ttctcatggt tgacagctta tcatcgataa gctgactcat gttggtattg 9360
tgaatatagac gcagatcggg aacactgaaa aataacagtt attattcg 9408

```

```

<210> 15
<211> 40
<212> PRT
<213> Glycine max

```

```

<220>
<223> Lunasin-GRG

```

```

<400> 15
Ser Lys Trp Gln His Gln Gln Asp Ser Cys Arg Lys Gln Leu Gln Gly
  1                               5                10                15

Val Asn Leu Thr Pro Cys Glu Lys His Ile Met Glu Lys Ile Gln Asp
                20                25                30

Asp Asp Asp Asp Asp Asp Asp Asp
  35                                40

```

```

<210> 16
<211> 21
<212> PRT
<213> Glycine max

```

```

<220>
<223> trLunasin

```

```

<400> 16
Glu Lys His Ile Met Glu Lys Ile Gln Gly Arg Gly Asp Asp Asp Asp
  1                               5                10                15

Asp Asp Asp Asp Asp
                20

```

8/10

<210> 17
<211> 10
<212> PRT
<213> Glycine max

<220>
<223> trLunasin-del

<400> 17
Glu Lys His Ile Met Glu Lys Ile Gln Gly
1 5 10

<210> 18
<211> 25
<212> PRT
<213> Glycine max

<220>
<223> NLS-trLunasin

<400> 18
Leu Glu Glu Lys Gln Lys Lys Lys Met Glu Lys Glu Gln Gly Arg Gly
1 5 10 15

Asp Asp Asp Asp Asp Asp Asp Asp Asp
20 25

<210> 19
<211> 11
<212> PRT
<213> Glycine max

<220>
<223> Lunasin

<400> 19
Cys Glu Lys His Ile Met Glu Lys Ile Gln Gly
1 5 10

<210> 20
<211> 12
<212> PRT
<213> Glycine max

<220>
<223> HuHP1 (p25)

<400> 20
Glu Glu Glu Glu Tyr Val Val Glu Lys Val Leu Asp
1 5 10

<210> 21
<211> 12
<212> PRT

9/10

<213> Glycine max

<220>

<223> DmPc

<400> 21

Val Asp Leu Val Tyr Ala Ala Glu Lys Ile Ile Gln
1 5 10

<210> 22

<211> 12

<212> PRT

<213> Glycine max

<220>

<223> Hu HP1B

<400> 22

Phe Glu Arg Gly Leu Glu Pro Glu Lys Ile Ile Gly
1 5 10

<210> 23

<211> 12

<212> PRT

<213> Glycine max

<220>

<223> SpSw16A

<400> 23

Glu Glu Asp Glu Tyr Val Val Glu Lys Val Leu Lys
1 5 10

<210> 24

<211> 12

<212> PRT

<213> Glycine max

<220>

<223> PCHET2A

<400> 24

Val Glu Glu Glu Phe Ile Val Glu Lys Ile Leu Asp
1 5 10

<210> 25

<211> 12

<212> PRT

<213> Glycine max

<220>

<223> DvHP1A

10/10

<400> 25
Glu Glu Glu Glu Tyr Ala Val Glu Lys Ile Leu Asp
1 5 10

<210> 26
<211> 12
<212> PRT
<213> Glycine max

<220>
<223> MoMOD1A

<400> 26
Glu Glu Glu Glu Tyr Val Val Glu Lys Val Leu Asp
1 5 10

<210> 27
<211> 12
<212> PRT
<213> Glycine max

<220>
<223> SmpAT26

<400> 27
Gly Glu Asp Glu Phe Gln Val Glu Lys Ile Leu Lys
1 5 10

<210> 28
<211> 12
<212> PRT
<213> Glycine max

<220>
<223> DmHP1A

<400> 28
Glu Glu Glu Glu Tyr Ala Val Glu Lys Ile Ile Asp
1 5 10



(19) World Intellectual Property Organization
International Bureau



(43) International Publication Date
4 October 2001 (04.10.2001)

PCT

(10) International Publication Number
WO 01/72784 A3

(51) International Patent Classification⁷: C07K 14/415,
C12N 15/29, A61K 38/16, A61P 35/00

[PH/US]; 2800 Dover Avenue #G-5, Fairfield, CA 94533 (US).

(21) International Application Number: PCT/US01/09453

(74) Agents: PETERS, Howard, M. et al.; Peters, Verny, Jones & Biksa, LLP, Suite 6, 385 Sherman Avenue, Palo Alto, CA 94306 (US).

(22) International Filing Date: 23 March 2001 (23.03.2001)

(25) Filing Language: English

(81) Designated States (national): AE, AG, AL, AM, AT, AU, AZ, BA, BB, BG, BR, BY, BZ, CA, CH, CN, CR, CU, CZ, DE, DK, DM, DZ, EE, ES, FI, GB, GD, GE, GH, GM, HR, HU, ID, IL, IN, IS, JP, KE, KG, KP, KR, KZ, LC, LK, LR, LS, LT, LU, LV, MA, MD, MG, MK, MN, MW, MX, MZ, NO, NZ, PL, PT, RO, RU, SD, SE, SG, SI, SK, SL, TJ, TM, TR, TT, TZ, UA, UG, US, UZ, VN, YU, ZA, ZW.

(26) Publication Language: English

(30) Priority Data:
09/534,705 24 March 2000 (24.03.2000) US

(63) Related by continuation (CON) or continuation-in-part (CIP) to earlier application:
US 09/534,705 (CIP)
Filed on 24 March 2000 (24.03.2000)

(84) Designated States (regional): ARIPO patent (GH, GM, KE, LS, MW, MZ, SD, SL, SZ, TZ, UG, ZW), Eurasian patent (AM, AZ, BY, KG, KZ, MD, RU, TJ, TM), European patent (AT, BE, CH, CY, DE, DK, ES, FI, FR, GB, GR, IE, IT, LU, MC, NL, PT, SE, TR), OAPI patent (BF, BJ, CF, CG, CI, CM, GA, GN, GW, ML, MR, NE, SN, TD, TG).

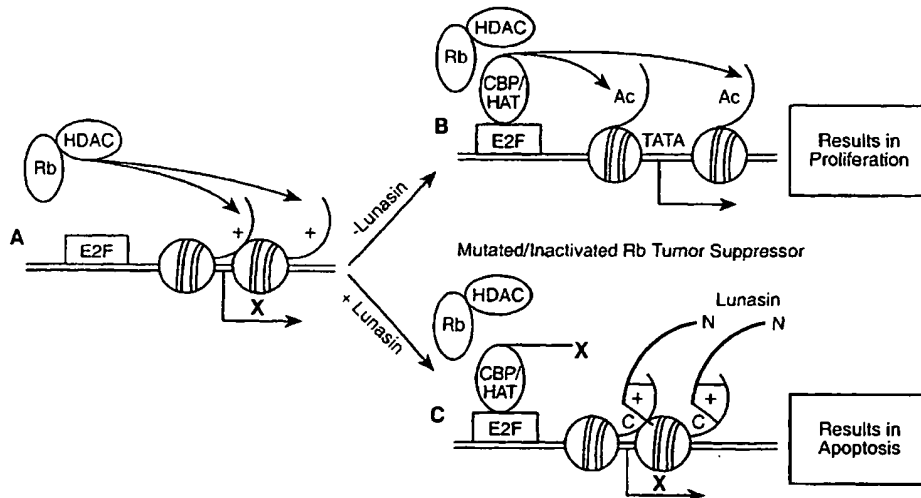
(71) Applicant (for all designated States except US): FILGEN BIOSCIENCES, INC. [US/US]: 2333 Courage Drive, Suite C, Fairfield, CA 94533 (US).

(72) Inventor; and
(75) Inventor/Applicant (for US only): GALVEZ, Alfredo, F.

Published:
— with international search report

[Continued on next page]

(54) Title: PEPTIDES BINDING TO NON-ACETYLATED H3 AND H4 HISTONES FOR CANCER THERAPY



(57) Abstract: The present invention describes a composition of matter comprising a conserved structural motif that allows the targeting and binding of a chromatin binding protein to non-acetylated histone H3 and H4 and prevents their acetylation. This invention is responsible for the anti-carcinogenic property of a chromatin binding peptide isolated from soybean seed. This structural motif is found in a highly conserved manner in other chromatin-binding proteins from different species. Modifications to this structural motif such as fusions to other proteins with functional motifs and amino acid substitutions have potential therapeutic applications and can be developed as an *in vivo* gene silencing technology for biological and medical research. In particular, active fragments of the lunasin peptide and active analogs of the lunasin peptide are useful in this invention. Pharmaceutical compositions useful in retarding or stopping or reducing various types of cancers are described.

WO 01/72784 A3



(88) Date of publication of the international search report:
6 June 2002

For two-letter codes and other abbreviations, refer to the "Guidance Notes on Codes and Abbreviations" appearing at the beginning of each regular issue of the PCT Gazette.

INTERNATIONAL SEARCH REPORT

International Application No

PCT/US 01/09453

A. CLASSIFICATION OF SUBJECT MATTER
 IPC 7 C07K14/415 C12N15/29 A61K38/16 A61P35/00

According to International Patent Classification (IPC) or to both national classification and IPC

B. FIELDS SEARCHED

Minimum documentation searched (classification system followed by classification symbols)

IPC 7 C07K A61K

Documentation searched other than minimum documentation to the extent that such documents are included in the fields searched

Electronic data base consulted during the international search (name of data base and, where practical, search terms used)

EPO-Internal, BIOSIS, WPI Data, PAJ, SEQUENCE SEARCH

C. DOCUMENTS CONSIDERED TO BE RELEVANT

Category *	Citation of document, with indication, where appropriate, of the relevant passages	Relevant to claim No.
X	WO 99 15642 A (UNIV CALIFORNIA) 1 April 1999 (1999-04-01) cited in the application page 1, line 27 -page 3, line 10 examples 4,5	1-28
A	--- GALVEZ A F: "A soybean cDNA encoding a chromatin-binding peptide inhibits mitosis of mammalian cells" NATURE BIOTECHNOLOGY, NATURE PUBLISHING, US, vol. 17, no. 5, May 1999 (1999-05), pages 495-500, XP002170660 ISSN: 1087-0156 the whole document --- -/--	1-28

Further documents are listed in the continuation of box C.

Patent family members are listed in annex.

* Special categories of cited documents:

- *A* document defining the general state of the art which is not considered to be of particular relevance
- *E* earlier document but published on or after the international filing date
- *L* document which may throw doubts on priority claim(s) or which is cited to establish the publication date of another citation or other special reason (as specified)
- *O* document referring to an oral disclosure, use, exhibition or other means
- *P* document published prior to the international filing date but later than the priority date claimed

- *T* later document published after the international filing date or priority date and not in conflict with the application but cited to understand the principle or theory underlying the invention
- *X* document of particular relevance; the claimed invention cannot be considered novel or cannot be considered to involve an inventive step when the document is taken alone
- *Y* document of particular relevance; the claimed invention cannot be considered to involve an inventive step when the document is combined with one or more other such documents, such combination being obvious to a person skilled in the art.
- *8* document member of the same patent family

Date of the actual completion of the international search

14 March 2002

Date of mailing of the international search report

21/03/2002

Name and mailing address of the ISA

European Patent Office, P.B. 5818 Patentlaan 2
 NL - 2280 HV Rijswijk
 Tel. (+31-70) 340-2040, Tx. 31 651 epo nl,
 Fax: (+31-70) 340-3016

Authorized officer

De Kok, A

INTERNATIONAL SEARCH REPORT

International Application No

PCT/US 01/09453

C.(Continuation) DOCUMENTS CONSIDERED TO BE RELEVANT

Category *	Citation of document, with indication, where appropriate, of the relevant passages	Relevant to claim No.
P, X	WO 00 66625 A (UNIV CALIFORNIA) 9 November 2000 (2000-11-09) the whole document ---	1-28
P, X	LAM Y ET AL: "IN VITRO AND IN VIVO CHEMOPREVENTIVE PROPERTIES OF A SOYBEAN PEPTIDE (LUNASIN)" FASEB JOURNAL (FEDERATION OF AMERICAN SOCIETIES FOR EXPERIMENTAL BIOLOGY), BETHESDA, US, vol. 15, no. 4, 7 March 2001 (2001-03-07), page A281 XP001025557 ISSN: 0892-6638 abstract ---	1-28
E	WO 01 34808 A (FILGEN BIOSCIENCES INC) 17 May 2001 (2001-05-17) the whole document -----	1-28

FURTHER INFORMATION CONTINUED FROM PCT/ISA/ 210

Continuation of Box I.2

Claims Nos.: 1, 6, 8, 13, 15, 17, all partially

Present claims 1, 6, 8, 13, 15 and 17 relate to lunasin fragments or analogs defined by reference to a desirable characteristic or property, namely by being "active".

The claims cover all fragments/analogues having this characteristic or property, whereas the application provides support within the meaning of Article 6 PCT and/or disclosure within the meaning of Article 5 PCT for only a very limited number of such fragments/analogues. In the present case, the claims so lack support, and the application so lacks disclosure, that a meaningful search over the whole of the claimed scope is impossible. Independent of the above reasoning, the claims also lack clarity (Article 6 PCT). An attempt is made to define the fragments/analogues by reference to a result to be achieved. Again, this lack of clarity in the present case is such as to render a meaningful search over the whole of the claimed scope impossible. Consequently, the search has been carried out for those parts of the claims which appear to be clear, supported and disclosed, namely those parts relating to the native lunasin peptide and to the fragments/analogues identified in claim 7 resp. 16 and 27.

The applicant's attention is drawn to the fact that claims, or parts of claims, relating to inventions in respect of which no international search report has been established need not be the subject of an international preliminary examination (Rule 66.1(e) PCT). The applicant is advised that the EPO policy when acting as an International Preliminary Examining Authority is normally not to carry out a preliminary examination on matter which has not been searched. This is the case irrespective of whether or not the claims are amended following receipt of the search report or during any Chapter II procedure.

INTERNATIONAL SEARCH REPORT

Information on patent family members

International Application No

PCT/US 01/09453

Patent document cited in search report		Publication date	Patent family member(s)	Publication date
WO 9915642	A	01-04-1999	US 6107287 A	22-08-2000
			AU 731631 B2	05-04-2001
			AU 9582198 A	12-04-1999
			CA 2303061 A1	01-04-1999
			EP 1017798 A1	12-07-2000
			JP 2001517434 T	09-10-2001
			WO 9915642 A1	01-04-1999
<hr/>				
WO 0066625	A	09-11-2000	AU 4809600 A	17-11-2000
			EP 1173476 A1	23-01-2002
			WO 0066625 A1	09-11-2000
<hr/>				
WO 0134808	A	17-05-2001	AU 1918301 A	06-06-2001
			WO 0134808 A2	17-05-2001
<hr/>				

**This Page is Inserted by IFW Indexing and Scanning
Operations and is not part of the Official Record**

BEST AVAILABLE IMAGES

Defective images within this document are accurate representations of the original documents submitted by the applicant.

Defects in the images include but are not limited to the items checked:

- BLACK BORDERS**
- IMAGE CUT OFF AT TOP, BOTTOM OR SIDES**
- FADED TEXT OR DRAWING**
- BLURRED OR ILLEGIBLE TEXT OR DRAWING**
- SKEWED/SLANTED IMAGES**
- COLOR OR BLACK AND WHITE PHOTOGRAPHS**
- GRAY SCALE DOCUMENTS**
- LINES OR MARKS ON ORIGINAL DOCUMENT**
- REFERENCE(S) OR EXHIBIT(S) SUBMITTED ARE POOR QUALITY**
- OTHER:** _____

IMAGES ARE BEST AVAILABLE COPY.

As rescanning these documents will not correct the image problems checked, please do not report these problems to the IFW Image Problem Mailbox.

THIS PAGE BLANK (USPTO)